

TECHNICAL MANUAL

ORGANIZATIONAL, DIRECT SUPPORT,

AND GENERAL SUPPORT MAINTENANCE

REPAIR PARTS AND SPECIAL TOOLS LISTS

(INCLUDING DEPOT MAINTENANCE

REPAIR PARTS AND SPECIAL TOOLS)

FOR

RADAR TEST SETS

AN/UPM-29A (NSN 6625-00-606-9179),

AN/UPM-29B (NSN 6625-00-771-6359),

AND

AN/UPM-29C (NSN 6625-00-832-5784)

TECHNICAL MANUAL }
 No. 11-6625-917-24P }

HEADQUARTERS
 DEPARTMENT OF THE ARMY
 WASHINGTON, DC, 30 December 1976

**ORGANIZATIONAL, DIRECT SUPPORT, AND
 GENERAL SUPPORT MAINTENANCE REPAIR
 PARTS AND SPECIAL TOOLS LISTS
 (INCLUDING DEPOT MAINTENANCE
 REPAIR PARTS AND SPECIAL TOOLS)
 FOR
 RADAR TEST SETS
 AN/UPM-29A (NSN 6625-00-606-9179),
 AN/UPM-29B (NSN 6625-00-771-6359),
 AND
 AN/UPM-29C (NSN 6625-00-832-5784)**

Current as of 20 September 1976

REPORTING OF ERRORS

You can improve this manual by recommending improvements using the DA Form 2028-2 (Test) located in the back of the manual. Simply tear out the self addressed form, fill it out as shown on the sample, fold it where shown, and drop it in the mail.

If there are no blank DA Form 2028-2 (Test) in the back of your manual, use the standard DA Form 2028 (Recommended Changes to Publications and Blank Forms) and forward to the Commander, US Army Electronics Command, ATTN: DRSEL-MA-Q, Fort Monmouth, New Jersey 07703.

In either case a reply will be furnished direct to you.

Table of Contents

Section		Page	Illus Figure
	I. Introduction	1	
	II. Repair parts list	5	
GROUP	00 Radar Test Sets AN/UPM-29A, AN/UPM-29B, AN/UPM-29C	5	1
	01 Cable Assembly CG-409E/U	7	2
	02 Cable assembly	9	3
	03 Test Sets, Radar TS-1335A/UPM-29B and TS-729B/UPM-29A	11	4
	0301 Microwave assembly	15	5
	030101 Thermistor mount	19	6
	030102 Level set attenuator assembly	21	7
	030103 Detector assembly	23	8

★ This manual supersedes so much of TM 11-6625-917-15, 7 July 1967, as pertains to repair parts and special tools list.

Table of Contents-Continued

	Page	Figure	
GROUP			
030104	Calibrated attenuator assembly	25	9
030105	Step attenuator assembly	27	10
030106	Tee assembly, frequency meter	29	11,12
0302	Chassis assembly	33	13
030201	Resistor board assembly (Z201)	37	14
030202	Resistor board assembly (Z306)	39	15
030203	Resistor board assembly (Z305)	41	16
030204	Resistor board assembly (Z304)	43	17
030205	Resistor board assembly (Z303)	45	18
030206	Resistor board assembly (Z302)	47	19
030207	Resistor board assembly (Z301)	49	20
04	Case assembly, transit	51	21
SECTION			
	III. Special tools list (Not applicable)	52	
	IV. National stock number and part number index		

SECTION I

INTRODUCTION

1. Scope

This manual lists repair parts and special tools required for performance of organizational, direct support, and general support maintenance of the AN/UPM-29A, AN/UPM-29B and AN/UPM-29C.

2. General

This Repair Parts and Special Tools List is divided into the following sections:

a. Section II. Repair Parts List. A list of repair parts authorized for use in the performance of maintenance. The list also includes parts which must be removed for replacement of the authorized parts. Parts lists are composed of functional groups in ascending numerical sequence, with the parts in each group listed in figure and item number sequence.

b. Section III. Special Tools List. Not applicable.

c. Section IV. National Stock Number and Part Number Index. A list, in ascending National item identification number (NIIN, last 9 digits) sequence, of all National stock numbers appearing in the listings, followed by a list, in alphameric sequence, of all part numbers appearing in the listings. National stock number and part numbers are cross-referenced to each illustration figure and item number appearance.

3. Explanation of Columns

The following provides an explanation of columns found in the tabular listings:

a. Illustration. This column is divided as follows:

(1) *Figure number.* Indicates the figure number of the illustration in which the item is shown.

(2) *Item number.* The number used to identify each item called out in the illustration.

b. Source, Maintenance and Recoverability Codes (SMR).

(1) *Source code.* Source codes are assigned to support items to indicate the manner of acquiring support items for maintenance, repair, or overhaul of end items. Source codes are entered in the first and second positions of the Uniform SMR Code format as follows:

<i>Code</i>	<i>Definition</i>
PA	Item procured and stocked for anticipated or known usage.
XD-A	support item that is not stocked. When required, item will be procured through normal supply channels.

NOTE

Cannibalization or salvage may be

used as a source of supply for any items source coded above except those coded XA, XD, and aircraft support items as restricted by AR 700-42.

(2) *Maintenance code.* Maintenance codes are assigned to indicate the levels of maintenance authorized to USE and REPAIR support items. The maintenance codes are entered in the third and fourth positions of the Uniform SMR Code format as follows:

(a) The maintenance code entered in the third position will indicate the lowest maintenance level authorized to remove, replace, and use the support item. The maintenance code entered in the third position will indicate one of the following levels of maintenance:

<i>Code</i>	<i>Application/Explanation</i>
O	Support item is removed, replaced, used at the organizational level.
H	Support item is removed, replaced, used at the general support level.

(b) The maintenance code entered in the fourth position indicates whether the item is to be repaired and identifies the lowest maintenance level with the capability to perform complete repair (i.e., all authorized maintenance functions). This position will contain one of the following maintenance codes:

<i>Code</i>	<i>Application/Explanation</i>
H	The lowest maintenance level capable of complete repair of the support item is the general support level.
Z	Nonreparable. No repair is authorized.

(3) *Recoverability code.* Recoverability codes are assigned to support items to indicate the disposition action on unserviceable items. The recoverability code is entered in the fifth position of the Uniform SMR Code format as follows:

<i>Recoverability Codes</i>	<i>Definition</i>
Z	Nonreparable item. When unserviceable, condemn and dispose at the level indicated in position 3.
H	Reparable item. When uneconomically reparable, condemn and dispose at the general support level.

c. National Stock Number. Indicates the National stock number assigned to the item and will be used for requisitioning purposes.

d. Part Number. Indicates the primary number

used by the manufacturer (individual, company, firm, corporation, or Government activity), which controls the design and characteristics of the item by means of its engineering drawings, specifications standards, and inspection requirements, to identify an item or range of items.

NOTE

When a stock numbered item is requisitioned, the repair part received may have a different part number than the part being replaced.

e. Federal Supply Code for Manufacturer (FSCM). The FSCM is a 5-digit numeric code listed in SB 708-42 which is used to identify the manufacturer, distributor, or Government agency, etc.

f. Description. Indicates the Federal item name and, if required, a minimum description to identify the item.

g. Unit of Measure (U/M). Indicates the standard of the basic quantity of the listed item as used in performing the actual maintenance function. This measure is expressed by a two-character alphabetical abbreviation (e.g., ea, in, pr, etc.). When the unit of measure differs from the unit of issue, the lowest unit of issue that will satisfy the required units of measure will be requisitioned.

h. Quantity Incorporated in Unit. Indicates the quantity of the item used in the breakout shown on the illustration figure, which is prepared for a functional group, subfunctional group, or an assembly.

4. Special Information

a. Usable on codes are shown in the description column. Uncoded items are applicable to all models. Identification of the usable on codes used in this publication are:

<i>Code</i>	<i>Used on</i>
5A9	AN/UPM-29A
5BA	AN/UPM-29B
5BB	AN/UPM-29C

b. The following publication pertains to the AN/UPM-29A, AN/UPM-29B and AN/UPM-29C and its components:
 TM 11-6625-917-15, Radar Test Sets AN/UPM-29A, AN/UPM-29B and AN/UPM-29C

5. How to Locate Repair Parts

a. When National stock number or part number is unknown.

(1) *First.* Using the table of contents, determine the functional group within which the repair part belongs. This is necessary since illustrations are prepared for functional groups and listings are divided into the same groups.

(2) *Second.* Find the illustration covering the functional group to which the repair part belongs.

(3) *Third.* Identify the repair part on the illustration and note the illustration figure and item number of the repair part.

(4) *Fourth.* Using the Repair Parts Listing, find the figure and item number noted on the illustration.

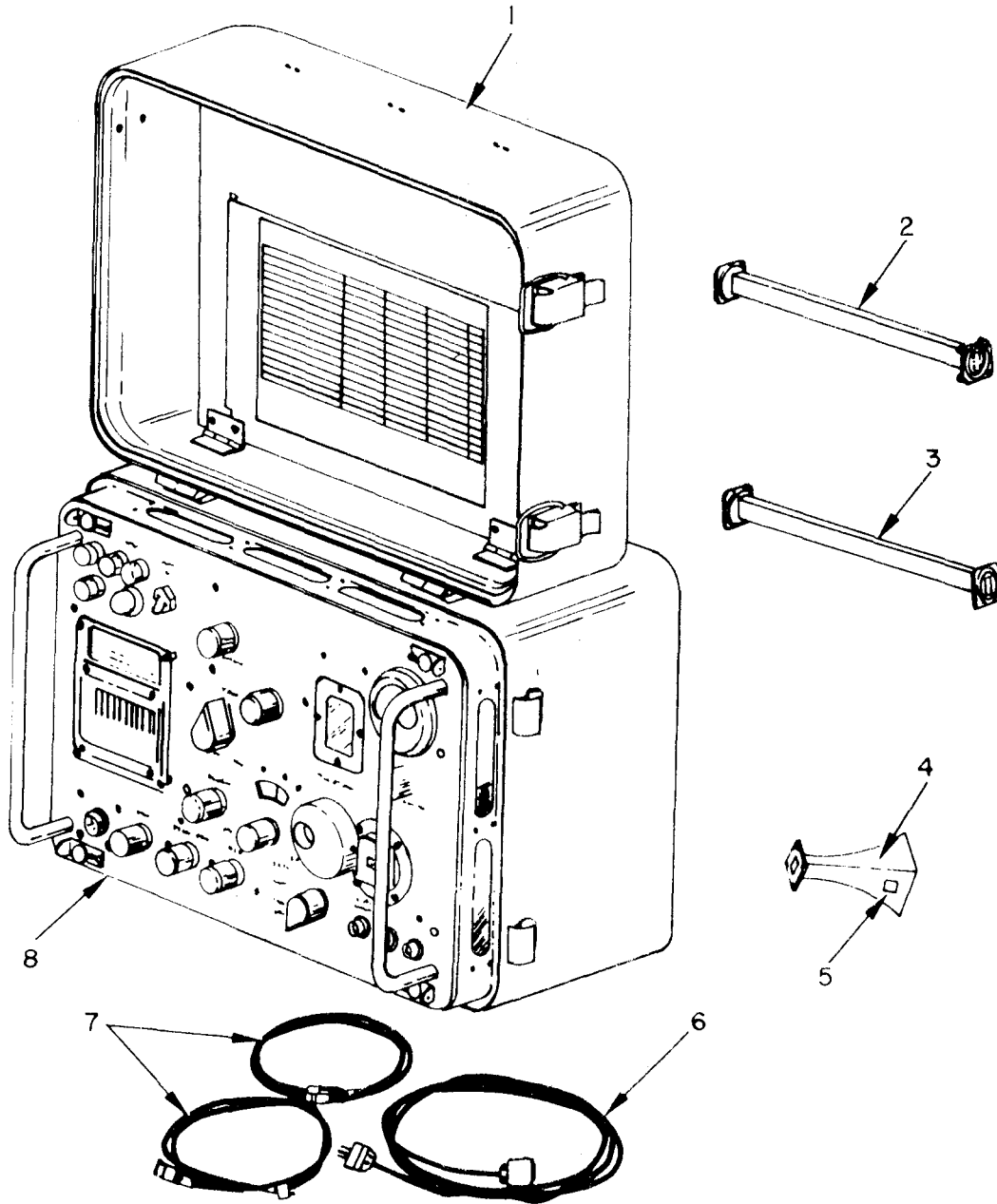
b. When National stock number or part number is known.

(1) *First.* Using the Index of National Stock Numbers and Part Numbers, find the pertinent National stock number or part number. This index is in ascending NIIN sequence followed by a list of part numbers in ascending alphameric sequence, cross-referenced to the illustration figure number and item number.

(2) *Second.* After finding the figure and item number, locate the figure and item number in the repair parts list.

6. Abbreviations

Not applicable.



ELOGZ001

Figure 1. Radar Test Sets AN/UPM-29A, AN/UPM-29B, and AN/UPM-29C.

(1) ILLUSTRATION		(2)	(3)	(4)	(5)	(6)	(7)	(8)
(a) FIG NO.	(b) ITEM NO.	SMR CODE	NATIONAL STOCK NUMBER	PART NUMBER	SCM	ES	USABLE ON CODE	QTY INC IN UNIT
						GROUP 00 00 RADAR TEST SETS AM/UFM-29A,B,C		
1	1	DHZZ		2686014	6424	CASE ASSEMBLY		EA 1
1	2	AOZZ	5985-00-553-5527	CG1303U	10058	WAVEGUIDE ASSEMBLY		EA 1
1	3	AOZZ	5985-00-556-0932	CG1299U	10058	WAVEGUIDE ASSEMBLY		EA 1
1	4	AOZZ	5985-00-504-7777	AT157U	10058	ANTENNA HORN		EA 1
1	5	DHZZ		741916	6424	PLATE, IDENTIFICATION		EA 1
1	6	AHHH	5995-00-823-2588	CX3135/U	10058	CABLE ASSEMBLY	5BA, 5BB	EA 1
1	6	AHHH	5995-00-577-3470	CX337/U	10058	CABLE ASSEMBLY	5A9	EA 1
1	7	AHHH	5995-00-503-0470	CG409EU	10058	CABLE ASSEMBLY		EA 2
1	8	AHHH	6625-00-012-3101	TS-1335A/UFM-29B	10058	TEST SET, RADAR	5BA, 5BB	EA 1
1	8	DHHH		TS-729B/UFM-29A	10058	TEST SET, RADAR	5A9	EA 1
						5		

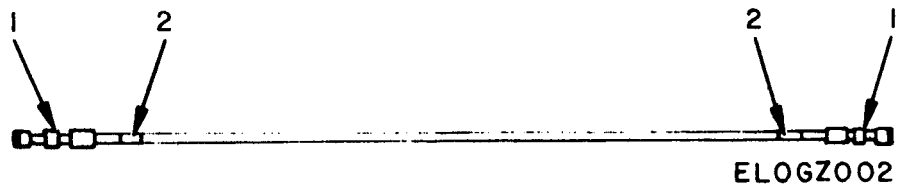


Figure 2. Cable Assembly CG-409E/U.

(1) ILLUSTRATION		(2)	(3)	(4)	(5)	(6)	(7)	(8)
(a) FIG No.	(b) ITEM NO.	SMR CODE	NATIONAL STOCK NUMBER	PART NUMBER	FSCM	DESCRIPTION	USABLE ON CODE	QTY INC IN
						GROUP 01 CABLE ASSEMBLY CG-409E/U		
2		PAHZZ	5935-00-823-0467	MS35168-88E	96906	CONNECTOR, PLUG, ELECTRICAL		EA 2
2		XDHZZ		0343-343	56232	BAND, MARKER		EA 2

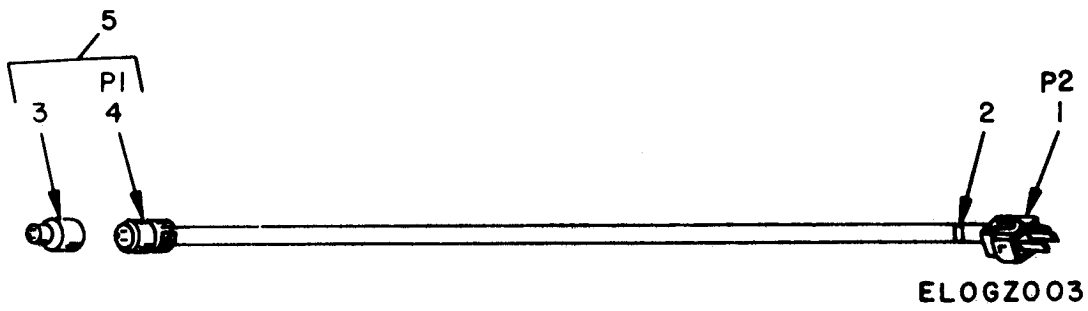


Figure 3. Cable Assembly.

SECTION II

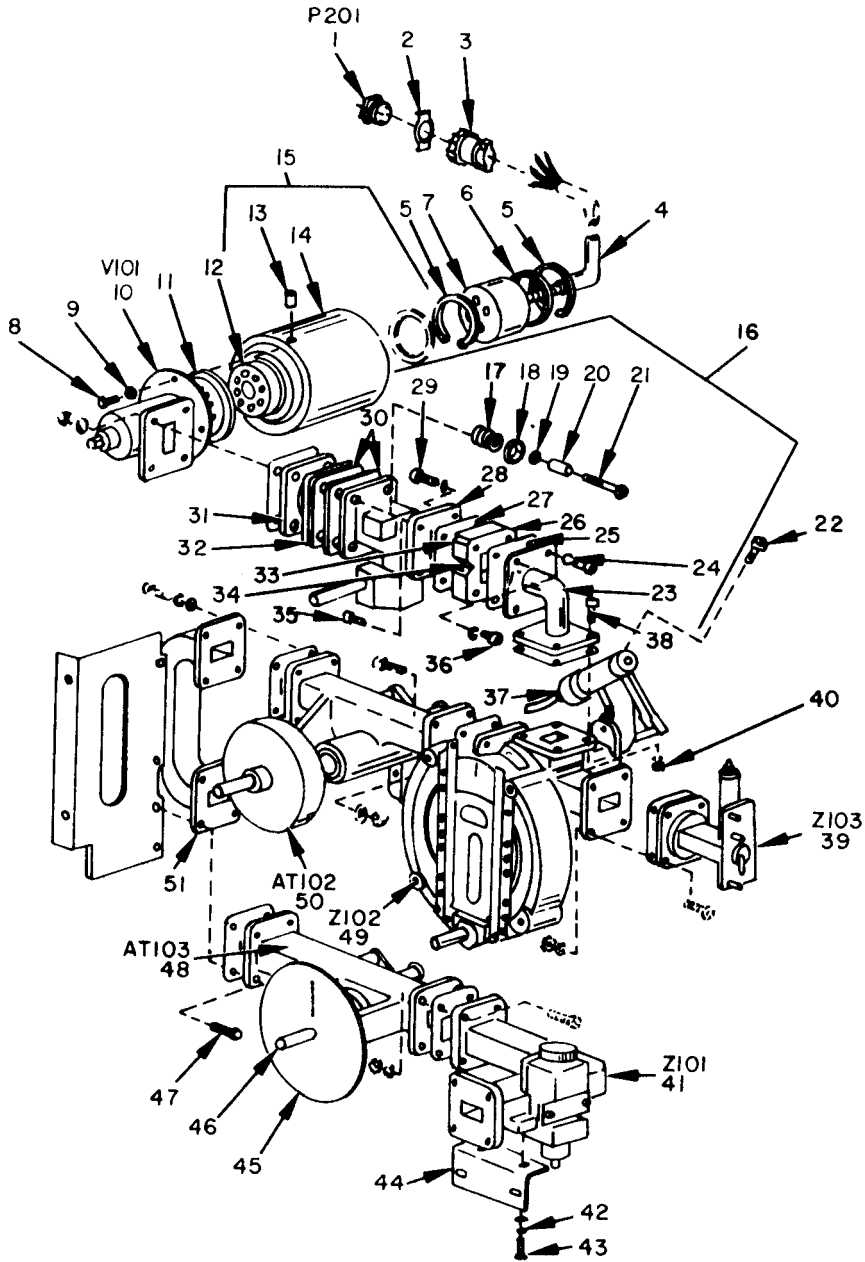
TM11-6625-917-24P

(1) ILLUSTRATION		(2)	(3)	(4)	(5)	(6)	(7)	(8)
(a) FIG NO	(b) ITEM NO	SMR CODE	NATIONAL STOCK NUMBER	PART NUMBER	FSCM	DESCRIPTION	USABLE ON CODE	QTY INC IN UNIT
						GROUP 02 CABLE ASSEMBLY		
	1	PAHEE	5935-00-043-0579	5295	74545	CONNECTOR, PLUG, ELECTRICAL	5BA, 5BB	E 1
	1	PAHEE	5935-00-259-7459	F7078	78011	CONNECTOR, PLUG, ELECTRICAL	5A9	E 1
	2	XDHEE		STYLE1638	91354	BAND, MARKER	5BA, 5BB	E 1
		PAHEE	5935-00-280-1936	AN3057-10B	88044	ADAPTER, CONNECTOR	5BA, 5BB	E 1
		PAHEE	5935-00-199-2657	MS31 06A16-9P	96906	CONNECTOR, PLUG, ELECTRICAL	5BA, 5BB	E 1
		PAHEE	5935-00-201-2774	18093	94033	CONNECTOR, PLUG, ELECTRICAL	5A9	E 1
		PAHEE	6025-00-088-4883	2687273	06424	ADAPTER ASSEMBLY	5BA, 5BB	E 1

(1)		(2)	(3)	(4)	(5)	(6)	(7)	(8)
ILLUS. FIG NO.	TION ITEM NO.	SMR COOS	NATIONAL STOCK NUMBER	PART NUMBER	FSCM	DESCRIPTION	U/M	QTY INC IN UNIT
						GROUP 03 TEST SETS, RADAR TS-1335A/UFM-29B AND TS-729B/UFM-29A		
4	1	PAHZZ	6625-00-855-8350	2656829	06424	COVER ASSEMBLY	5A9	EA 1
4	2	XDHZZ		2686059	06424	GUARD, SHIELD	5BA, 5BB	EA 1
4	3	XDHZZ		MS35649-64	96906	NUT		EA 15
4	4	XDHZZ		0188-7	56232	WASHER		EA 10
4	5	XDHZZ	5310-00-209-1366	MS35335-58	%906	WASHER		EA 9
4	6	XDHZZ		MS35649-44	96906	NUT		EA 6
4	7	XDHZZ	5310-00-933-8118	MS35338-78	96906	WASHER		EA 2
4	8	XDHZZ		MS35233-28	96906	SCREW		EA 2
4	9	XDHZZ		331509	06424	STRIP, INSULATOR		EA 2
4	10	XDHZZ		7447 w	06424	CLAMP, SHIELD		EA 2
4	11	XDHZZ		MS35233-27	96906	SCREW	5BA, 5BB	EA 2
4	12	XDHZZ		MS35249-24	96906	SCREW	5BA, 5BB	EA 2
4	13	XDHZZ		881840	06424	CRADLE	5BA, 5BB	EA 2
4	14	PAHZZ	3010-00-528-8229	39022	76487	COUPLING, FLEXIBLE	5BA, 5BB	EA 1
4	15	XDHZZ		331599	06424	SHAFT	5BA, 5BB	EA 1
4	16	PAHZZ	5365-00-554-8486	241724	%232	BUSHING	5BA, 5BB	EA 3
4	17	PAHZZ	6625-00-855-1519	877797	06424	COLLAR, SHAFT	5BA, 5BB	EA 1
4	18	XDHZZ		MS51017-20	96906	SETSCREW	5BA, 5BB	EA 1
4	19	XDHHH		618224	06424	MICROWAVE ASSEMBLY		EA 1
4	25	PAHZZ	5905-00-646-5992	RV4MAYSB252A	81349	RESISTOR, VARIABLE		EA 1
4	21	XDHZZ		882151	06424	BRACKET, MOUNTING		EA 1
4	22	XDHZZ	5310-00-058-3599	MS3 5335-57	96906	WASHER		EA 2
4	23	XDHZZ		MS35233-15	96906	SCREW		EA 2
4	24	XDHZZ		MS35338-79	96906	WASHER		EA 6
4	25	XDHZZ		882150	06424	GASKET		EA 1
4	26	XDHZZ		882112	06424	BEZEL		EA 1
4	27	PAHZZ	6625-00-539-8212	7108-7	06424	AMMETER, DIRECT CURRENT		EA 1
4	28	PAHZZ	5355-00-935-3858	862468	06424	WINDOW		EA 1
4	29	XDHZZ		2650480-124	06424	SCREW		EA 4
4	30	PAHZZ	5905-03-552- 5478	RV4MAYSD102A	81349	RESISTOR, VARIABLE		EA 1
4	31	XDHZZ		2616517	06424	WASHER, LAMINATED		EA 2
4	32	XDHZZ		MS35233-6	%906	SCREW		EA 2
4	33	XDHZZ	5310-00-616-3555	MS35333-71	96906	WASHER		EA 6
4	34	XDHZZ		2605303	06424	RING		EA 1
4	35	PAHZZ	6625-00-846-2959	882162	0%24	GASKET		EA 1
4	36	XDHHH		2645295	06424	CHASSIS ASSEMBLY		EA 1
4	37	XDHZZ		2658069-227	%232	SCREW		EA 2
4	38	XDHZZ		714595-224	56232	SCREW		EA 3
4	39	XDHZZ	5310-00-595-6211	MS15795-803	96906	WASHER		EA 3

(1) ILLUSTRATION		(2)	(3)	(4)	(5)	(6)	(7)	(8)
(a) FIG NO	(b) ITEM NO	SMR CODE	NATIONAL STOCK NUMBER	PART NUMBER	FSCM	DESCRIPTION	USABLE ON CODE	QTY INC IN UNIT
4	40	XDHEZ		MS35234-62	96906	SCREW		EA 4
4	41	XDHEZ	5310-00-619-1148	MS15795-808	96906	WASHER		EA 4
4	42	PAHEZ	5330-00-088-4869	2657527-2	06424	GASKET, PANEL		EA 1
4	43	XDHEZ		2620901	06424	FLANGE		EA 1
4	44	XDHEZ		2620906	06424	GASKET		EA 1
4	45	PAHEZ	5935-00-843-9008	UG1094AU	81349	CONNECTOR, RECEPTACLE, ELECTRICAL		EA 3
4	46	XDHEZ		A104-3	80813	GUIDE, SNAPSLIDE		EA 4
4	47	XDHEZ		MS35338-77	96906	WASHER		EA 3
4	48	XXDHE		882113	06424	HANDLE, BOW		EA 2
4	49	XDHEZ	5310-00-550-3715	MS35333-70	96906	WASHER	5BA, 5BB	EA 4
4	50	XDHEZ		MS35233-12	96906	SCREW	5BA, 5BB	EA 4
4	51	XDHEZ		2657980	06424	PLATE, IDENTIFICATION	5BB	EA 2
4	52	XDHEZ	5305-00-282-8902	MS51021-25	96906	SETSCREW		EA 2
4	53	PAOZZ	5355-00-559-8943	MS91528-2K2B	96906	KNOB		EA 1
4	54	PAHEZ	5975-00-513-2712	H1268	49673	BOOT, DUST		EA 9
4	55	XDHEZ		1-1905M3-5N	91812	SWITCH, ROTARY		EA 1
4	56	XDOZZ		882115	06424	KNOB		EA 1
4	57	PAHEZ	5940-00-549-8176	TMT12M	91663	TERMINAL, STUD		EA 3
4	58	XDHEZ		673571-235	56232	SCREW		EA 4
4	59	XDHEZ		MS35233-13	96906	SCREW		EA 1
4	60	PAOZZ	5355-00-616-7669	90-2-2G	49956	KNOB		EA 1
4	61	XDHEZ		MS35233-14	96906	SCREW		EA 2
4	62	XDHEZ		881841	06424	NUT		EA 2
4	63	XDHEZ		63152	01121	RESISTOR, VARIABLE		EA 1
4	64	PAHEZ	5355-00-95-3857	882114	06424	WINDOW, DIAL		EA 1
4	65	XDHEZ		MS35233-29	96906	SCREW		EA 2
4	66	PAHEZ	5905-00-539-4900	RV4NAYSD503A	81349	RESISTOR, VARIABLE		EA 1
4	67	PAHEZ	5905-00-542-9981	RV4NAYSD505A	81349	RESISTOR, VARIABLE		EA 1
4	68	PAHEZ	5905-00-171-2006	RC20GF271J	81349	RESISTOR, FIXED, COMPOSITION		EA 1
4	69	PAOZZ	5355-00-10-958-9982	90-2WD-3G	49956	KNOB		EA 7
4	70	PAHEZ	5905-00-552-2265	RV4NAYSD105A	81349	RESISTOR, VARIABLE		EA 1
4	71	PAHEZ	5325-00-880-7789	A104-3	80813	LATCH, SNAPSLIDE		EA 4
4	72	XDHEZ	5305-00-054-5636	MS35233-2	96906	SCREW	5BA, 5BB	EA 3
4	73	PAHEZ	5905-00-279-3511	RC20GF511J	81349	RESISTOR, FIXED, COMPOSITION		EA 1
4	74	PAHEZ	5905-00-279-1719	RC32GF103J	81349	RESISTOR, FIXED, COMPOSITION		EA 1
4	75	PAHEZ	5905-00-114-5401	RCR20G244JS	81349	RESISTOR, FIXED, COMPOSITION	5A9, 5BA	EA 1
4	75	PAHEZ	5905-00-279-2519	RC20GF334J	81349	RESISTOR, FIXED, COMPOSITION	5BB	EA 1
4	76	PAHEZ	5905-00-104-8339	RCR20G824JS	81349	RESISTOR, FIXED, COMPOSITION	5A9, 5BA	EA 1
4	76	PAHEZ	5905-00-279-3505	RC20GF392J	81349	RESISTOR, FIXED, COMPOSITION	5BB	EA 1
4	77	PAHEZ	5975-00-965-7612	SR7P2	28520	BUSHING, STRAIN	5BA, 5BB	EA 1
4	78	PAHEZ	5330-00-243-7362	MS24663	96906	CONNECTOR, RECEPTACLE, ELECTRICAL		EA 1

(1)		(2)		(3)	(4)	(5)	(6)	(7)	(8)
(a) FIG NO.	(b) ITEM NO.	SMR CODE	NATIONAL STOCK NUMBER	PART NUMBER	SCM	DESCRIPTION	USABLE ON CODE	U/M	QTY INC IN UNIT
4	8	XDHZZ		2620931	1642	GASKET	5BA,5BB	EA	1
4	8	XDHZZ		MS35233-44	1690	SCREW		EA	4
4	8	XDHZZ	5310-00-543-273	MS35333-72	1690	WASHER		EA	4
4	8	PAHZZ	5330-00-088-487	2657527-3	1642	GASKET,PANEL		EA	1
4	8	PAHZZ	9905-00-935-385	2687652	1642	CHART,CALIBRATION		EA	1
4	8	XDHZZ		A104-6-2	1081	WASHER		A	4
4	8	XDHZZ		MS35233-25	1690	SCREW		A	4
4	8	XDHZZ		MS35338-81	1690	WASHER		A	4
4	8	PAHZZ	5210-00-553-116	95408-931-56K	261	LIGHT,INDICATOR		A	1
4	8	XDOZZ		NE51	1134	LAMP,INCANDESCENT			1
4	9	PAHZZ	5330-00-088-487	2657527-1	1642	GASKET,PANEL	5BA,5BB		1
4	9	XDHZZ		2658069-232	1623	SCREW	5BA,5BB		
4	9	XDHZZ	5365-00-540-879	2102	1333	SPACER	5BA,5BB		
4	9	PAHZZ	6625-00-924-0322	A27067	1221	DRIVE ASSEMBLY	5BA,5BB		1
4	9	XDHZZ		2685280-1	1642	PANEL,TEST			1
4	9	PAQZZ	5920-00-877-993	F02A250V3AS	1134	FUSE,CARTRIDGE			
4	9	PAHZZ	5920-00-892-931	FHN26G	1134	FUSEHOLDER			4
4	9	PAHZZ	5930-00-655-157	MS35059-22	1690	SWITCH,TOGGLE			1
4	9	PAHZZ	5930-00-689-678	1030	1753	BOOT,DUST			1
4	9	XDHZZ		323713	1623	WASHER	5A9		1



ELOGZ005

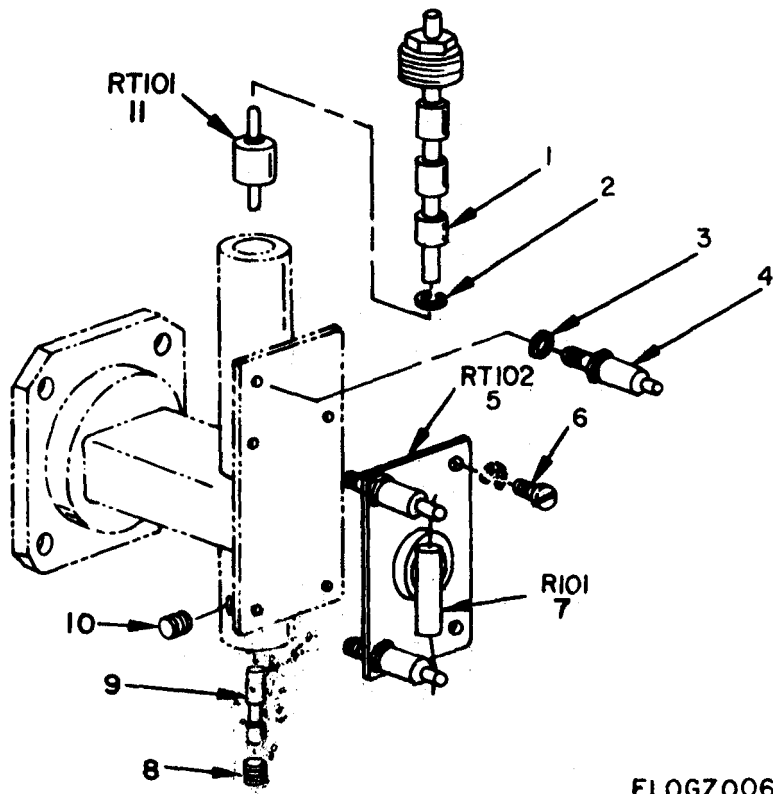
Figure 5. Microwave Assembly.

SECTION II

TM11-6625-917-24P

(1)		(2)	(3)	(4)	(5)	(6)	(7)	(8)
ILLUS FIG NO	TION TEM NO	SMR CODE	NATIONAL STOCK NUMBER	PART NUMBER	FSCM	DESCRIPTION	USABLE Q ODE	QTY INC IN UNIT
						GROUP 0301 MICROWAVE ASSEMBLY		
5	1	PAHZZ	5935-00-819-6957	M7PLSN	81312	CONNECTOR, PLUG, ELECTRICAL ASSEMBLY		EA 1
5	2	FAHZZ	5340-00-310-4798	21609	81312	SPRING, LOCK		EA 1
5	3	PAHZZ	5935-00-295-3329	XL3-13N	71468	SHIELD, ELECTRICAL		EA 1
5	4	XDHZZ		2375160	06424	CABLE ASSEMBLY		EA 1
5	5	XDHZZ		MS16625-2175	96906	RING		EA 2
5	6	XDHZZ		331593	06424	WASHER, PLAIN		EA 1
5	7	XDHZZ		881838	06424	SHIELD, POLYIRON		EA 1
5	8	XDHZZ		0407-130	56232	SCREW		EA 4
5	9		531 0-00-933-8118	MS35338-78	96906	WASHER		EA 4
5	10	PAHZZ	5960-00-834-8248	2377736-2	06424	KLYSTRON		EA 1
5	11	XDHZZ		044	82805	GASKET, SHIELD		EA 1
5	12	XDHZZ		51 E17599	71785	GASKET, ELECTRON		EA 1
5	13	XDHZZ		0450-17	06424	PIN, STRAIGHT		EA 1
5	14	XDHZZ		744734	06424	HOUSING, SHIELD		EA 1
5	15	XDHHH		744735-2	06424	SHIELD ASSEMBLY		EA 1
5	16	XDHHH		881903	06424	CONVERTER ASSEMBLY		EA 1
5	17	XDHZZ		331516	06424	SHIM		EA 4
5	18	XDHZZ		331517	06424	WASHER		EA 4
5	19	XDHZZ		0188-7	56232	WASHER		EA 12
5	20	XDHZZ		331515	06424	SPACER		EA 4
5	21	XDHZZ		0407-231	56232	SCREW		EA 4
5	22	XDHZZ		0444-228	56232	SCREW		EA 8
5	23	PAHZZ	6625-00-846-2948	882147	06424	ELBOW		EA 1
5	24	XDHZZ		MS35338-79	96906	WASHER		EA 32
5	25	PAHZZ	5330-00-088-4904	882786	06424	GASKET		EA 10
5	26	XDHZZ		744789	06424	CONVERTER		EA 1
5	27	PAHZZ	705	881898	06424	GASKET		EA 1
5	28	PAHHH	6625-00-624-2734	616940	06424	ATTENUATOR ASSEMBLY		EA 1
5	29	XDHZZ		0444-224	56232	SCREW		EA 3
5	30	PAHZZ	6625-00-924-0318	881853	06424	PLATE, POLYIRON		EA 2
5	31	XDHZZ		744745	06424	SPACER		EA 1
5	32	PAHZZ	5970-00-839-8222	881822	06424	INSULATOR		EA 2
5	33	XDHZZ		331528	06424	POST, TUNING		EA 1
5	34	XDHZZ		MS51017-3	96906	SETSCREW		EA 1
5	35	XDHZZ		0444-226	56232	SCREW		EA 8
5	36	XDHZZ		0444-220	56232	SCREW		EA 1
5	37	XDHZZ		4436Y0B	17945	SHAFT, FLEXIBLE		EA 1
5	38	XDHZZ		0444-226	56232	SCREW		EA 12
5	39	PAHHH	6625-00-611-5614	617912	06424	THERMISTOR MOUNT		EA 1
5	40	XDHZZ		MS35649-64	96906	NUT		EA 24

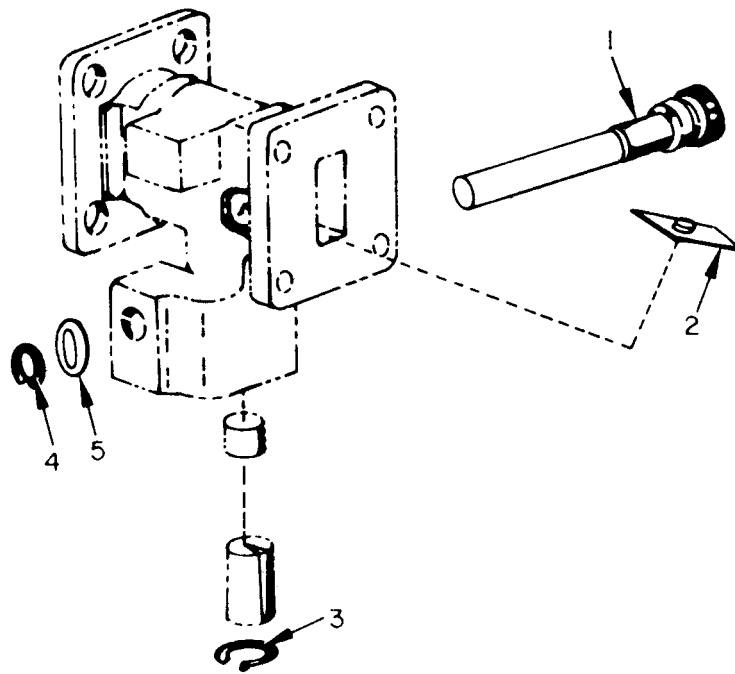
(1) ILLUSTRATION		(2)	(3)	(4)	(5)	DESCRIPTION USABLE ON CODE	(6) QTY INC IN UNIT
(a) FIG NO.	(b) ITEM NO.	SMR CODE	NATIONAL STOCK NUMBER	PART NUMBER	FSC#		
5		PAHHH	6625-00-624-2733	617458	0642	DETECTOR ASSEMBLY	1
5		XDHZ	5310-00-209-1366	MS35335-58	9690	WASHER	2
5		XDZZ		MS35233-28	9690	SCREW	2
5		XDZZ		331507	0642	BRACKET , FLANGE	1
5		XDZZ		741812	0642	DIAL ASSEMBLY	1
5				MS16562-204		PIN	1
5		XDZZ		0444-229	5623	SCREW	2
5		PAHHH	6625-00-629-1976	616938	0642	ATTENUATOR ASSEMBLY	1
5		PAHHH	6625-00-609-3795	617135	0642	TEE ASSEMBLY,FREQUENCY	1
5		PAHHH	6625-00-624-2731	616939	0642	ATTENUATOR ASSEMBLY	1
5		PAHZZ	6625-00-846-2910	747241	0642	WAVEGUIDE	1



ELOGZ006

Figure 6. Thermistor Mount.

(1) ILLUSTRATION		(2)	(3)	(4)	(5)	(6)	(7)	(8)
(a) FIG NO	(b) ITEM NO	SMR CODE	NATIONAL STOCK NUMBER	PART NUMBER	FSCM	DESCRIPTION	USABLE ON CODE	QTY INC IN UNIT
						GROUP 030101 THERMISTOR MOUNT		
6	1	PAHZZ	6625-00-846-2909	745591	06424	CONDUCTOR, CENTER	EA	1
	2	XDHZZ		2600432	06424	WASHER	EA	1
6	3	XDHZZ		MS35338-77	96906	WASHER	EA	5
6	4	XDHZZ		DTMS12J	91663	TERMINAL, STUD	EA	3
6	5	PAHZZ	5905-00-284-3049	28D1	83186	THERMISTOR, DISK	EA	1
6	6	XDHZZ		0407-060	56232	SCREW	EA	2
6	7	PAHZZ	991 5-00-5 01-4299	305805	06424	SUPPRESSOR, PARASITIC	EA	1
6	8	XDHZZ		MS51026-16	96906	SETSCREW	EA	1
6	9	XL HZZ		382321	06424	ROD	EA	1
6	10	XDHZZ		04 46-130	56232	SETSCREW	EA	1
6	11	PAHZZ	5905-00-630-6933	673408	06424	RESISTOR, THERMAL	EA	1



ELOGZ007

Figure 7. Level Set Attenuator Assembly.

(1) ILLUSTRATION		(2)	(3)	(4)	(5)	(6)	(7)	(8)
(a) FIG No.	(b) ITEM NO.	SMR CODE	NATIONAL STOCK NUMBER	PART NUMBER	FSCM	DESCRIPTION	U/M	QTY INC IN UNIT
							USABLE ON CODE	
						GROUP 030102 LEVEL SET ATTENUATOR ASSEMBLY		
7	1		3040-00-836-3143	878251	06424	GEAR, SPUR	EA	1
7	2	PAHZZ	6625-00-924-0317	330485	06424	CARD, RESISTANCE	EA	1
7	3	XDRZZ		MS16625-2037	96906	RING	EA	1
7	4			MS16624-2025	96906	RING	EA	1
7	5	PAHZZ	5310-00-880-9026	3502-14-25		WASHER	EA	1

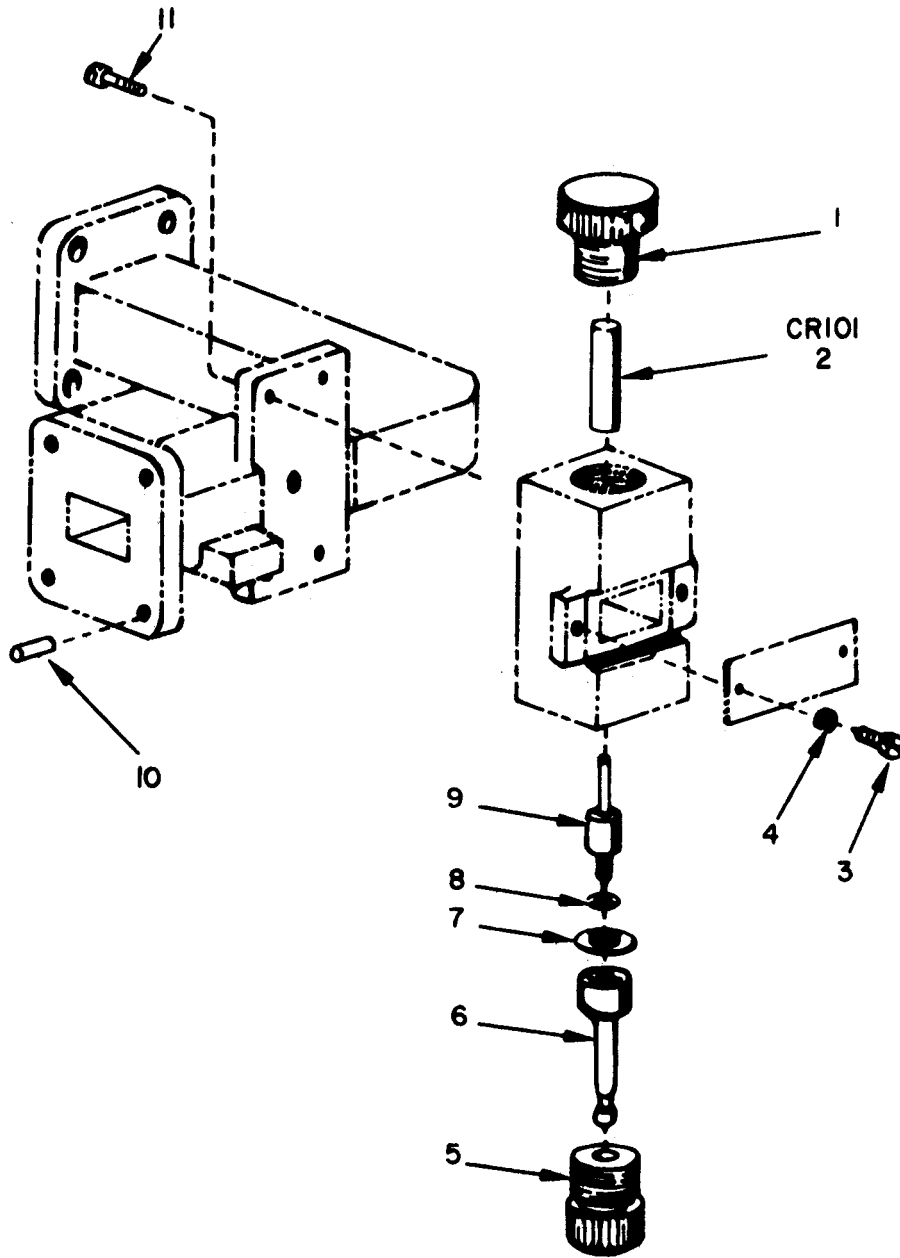
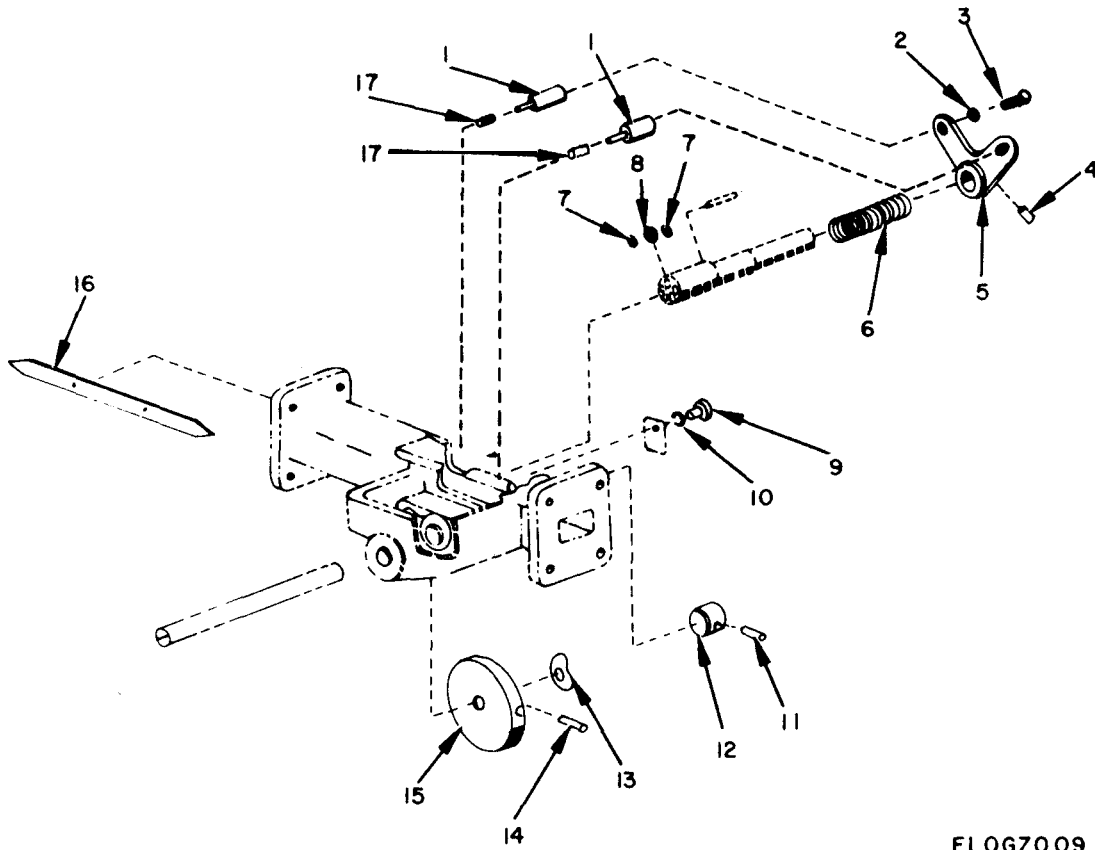


Figure 8. Detector Assembly.

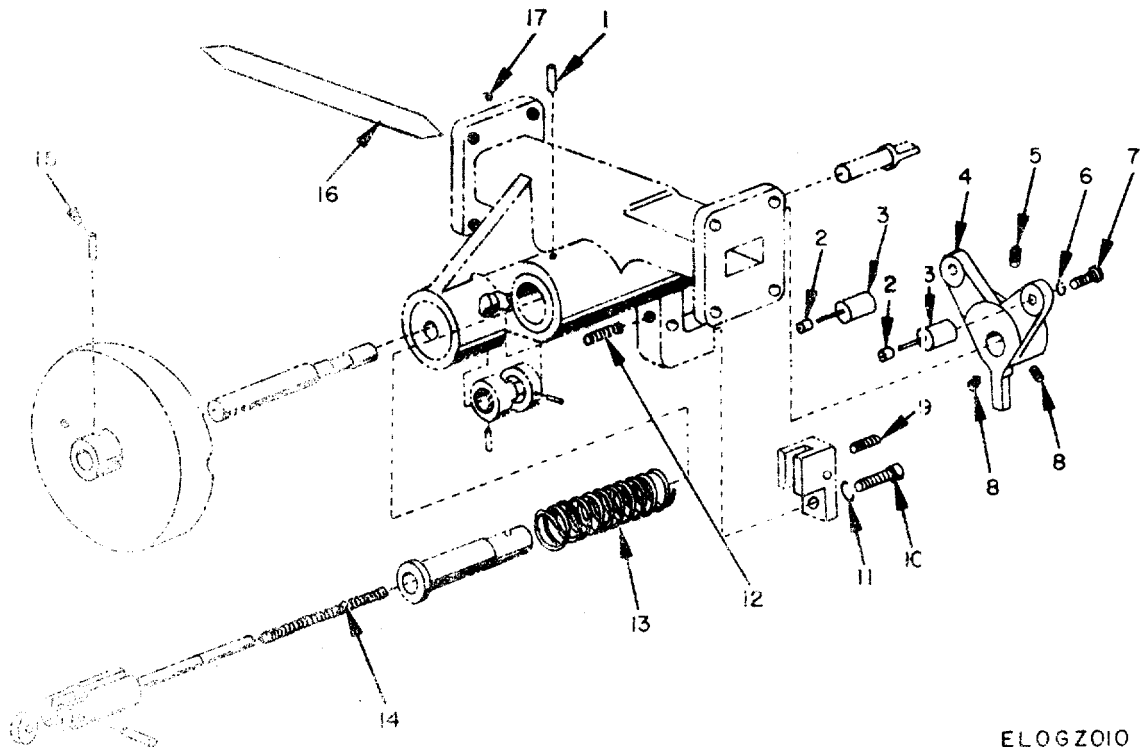
(1) ILLUSTRATION		(2)	(3)	(4)	(5)	(6)	(7)	(8)
(a) FIG NO	(b) ITEM NO	SMR CODE	NATIONAL STOCK NUMBER	PART NUMBER	FSCM	DESCRIPTION USABLE ON CODE	U/M	QTY INC IN UNIT
						GROUP 030103 DETECTOR ASSEMBLY		
8	1	PAHZZ	5365-00-782-0363	878475	06424	PLUG	EA	1
8	2	PAHZZ	5961-00-553-7135	1N78R	80131	SEMICONDUCTOR DEVICE, DIODE	EA	1
8	3	XDHZZ		0407-062	56232	SCREW	EA	2
8	4	XDHZZ		MS35338-77	96906	WASHER	EA	2
8	5	XDHZZ		87874	06424	PLUG	EA	1
8	6	PAHZZ	5999-00-902-7572	878477	06424	CONTACT	EA	1
8	7	PAHZZ	5340-00-861-4168	290742	06424	SHIM	EA	1
8	8	PAHZZ	5310-00-860-4923	313537	06424	WASHER, FLAT	EA	1
8	9	PAHZZ	6625-00-088-4892	842108	06424	CONDUCTOR	EA	1
8	10	PAHZZ	5340-00-843-0003	MS122078	96906	INSERT	EA	4
8	11	XDHZZ		0407-064	56232	SCREW	EA	4



ELOGZ009

Figure 9. Calibrated Attenuator Assembly.

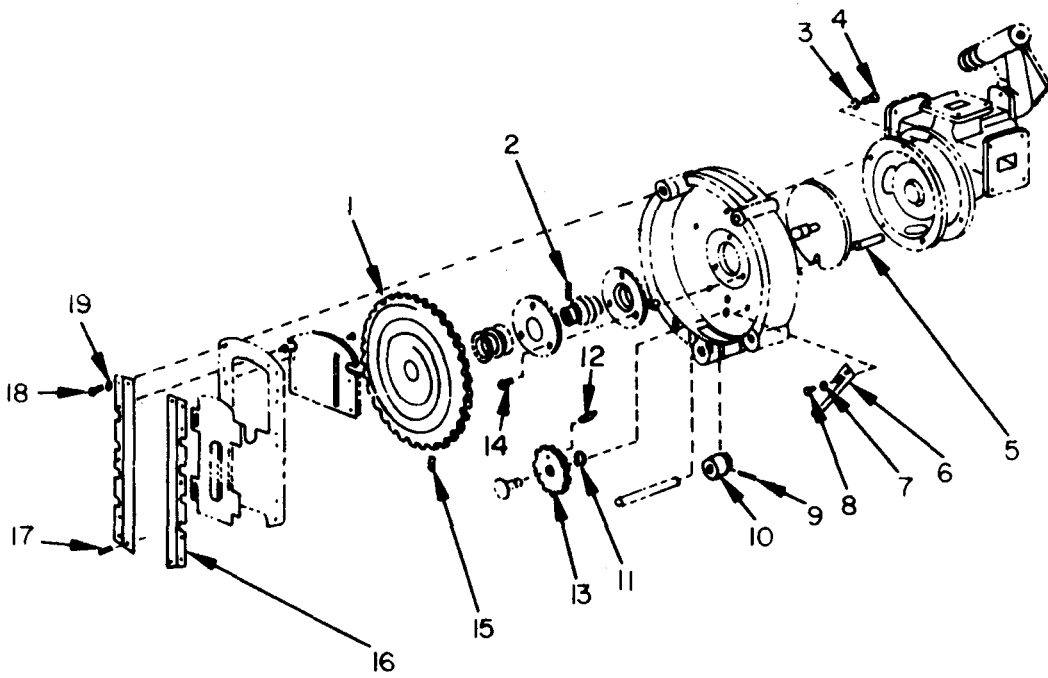
(1) ILLUSTRATION		(2)	(3)	(4)	(5)	(6)	(7)	(8)
(a) FIG NO.	(b) ITEM NO.	SMR CODE	NATIONAL STOCK NUMBER	PART NUMBER	FSCM	DESCRIPTION	U/M	QTY INC IN UNIT
						UNABLE TO CODE		
						GROUP 030104 CALIBRATED ATTENUATOR		
						ASSEMBLY		
9	1	XDHZZ		330549	1642	ADAPTER, BRACKET	EA	2
9	2	XDHZZ		720561-2	5623	WASHER	EA	2
9	3	XDHZZ		823957-064	5623	SCREW	EA	2
9	4	XDHZZ	5305-00-800-724	MS51021-9	1690	SETSCREW	EA	2
9	5	PAHZZ	5625-00-088-488	742009	1642	BRACKET, MOUNTING	EA	1
9	6	PAHZZ	5360-00-988-1268	240842	5623	SPRING, HELICAL	EA	1
9	7	XDHZZ		303930	5623	WASHER	EA	2
9	8	PAHZZ	3110-00-935-566	SS4CP25L0-1		BEARING, BALL	EA	1
9	9	XDHZZ		823957-060	5623	SCREW	A	1
9	10	XDHZZ		720561-1	5623	WASHER	A	1
9	11	XDHZZ		MS171465	1690	PIN	A	1
9	12	XDHZZ		240716	5623	COLLAR, SHAFT	A	1
9	13	XDHZZ		BOW25K38	1328	WASHER, SPRING	A	1
9	14	XDHZZ	5315-00-187-322	0404-009	5623	PIN	A	1
9	15	XDHZZ		618058	1642	CAM, ATTENUATOR	A	1
9	16	XDHZZ		5619-1	1714	CARD, ATTENUATOR	A	1
9	17	XDHZZ		330490	1642	BUSHING	A	2



ELOGZ010

FIGURE 10. Step Attenuator Assembly.

(1) ILLUSTRATION		(2) SMR CODE	(3) NATIONAL STOCK NUMBER	(4) PART NUMBER	(5) FSCM	(6) DESCRIPTION	(7) USABLE ON CODE	(8) U/M	(9) QTY INC IN UNIT
(a) FIG NO.	(b) ITEM NO.								
						GROUP 030105 STEP ATTENUATOR ASSEMBLY			
10	1	KDHZZ		0450-033	56232	PIN, STRAIGHT		E	1
10	2	KDHZZ		330490	06424	BUSHING, ATTENUATOR		E	2
10	3	KDHZZ		330539	06424	ADAPTER, ATTENUATOR		E	2
10	4	PAHZZ	662 5-00-855-8378	741910	06424	GUIDE, ATTENUATOR		E	1
10	5	KDHZZ		846017	56232	SETScrew		E	1
10	6	KDHZZ		MS35338-77	96906	WASHER		E	2
10	7	KDHZZ		MS35233-4	96906	SCREW		E	2
10	8	KDHZZ	5305-00-800-7261	MS51021-9	96906	SETScrew		E	2
10	9	KDHZZ		LP57XA62J6	03038	SETScrew		E	1
10	10	KDHZZ		0407-226	56232	SCREW		E	1
10	11	KDHZZ		MS35338-79	96906	WASHER		E	1
10	12	KDHZZ		LP57XA62J8	03038	SETScrew		E	1
10	13	PAHZZ	5360-00-988-1270	240712	06424	SPRING, HELICAL		E	1
10	14	PAHZZ	6625-00-988-1271	240713	06424	SPRING, HELICAL		E	1
10	15	KDHZZ	5315-00-823-8754	MSL71437	96906	PIN		E	1
10	16	KDHZZ		5619-1	07149	CARD, ATTENUATOR		E	1
10	17	PAHZZ	5340-00-843-0003	MS122078	96906	INSERT		E	4



ELOGZO11

Figure 11. Tee Assembly, Frequency Meter.

(1)		(2)	(3)		(4)	(5)	(6)	(7)	(8)
ILLUS FIG NO.	TIO/ ITEA NO	CODE	NATIONAL STOCK NUMBER	PART NUMBER	FSCM	DESCRIPTION	USABLE ON CODE	U/M	QTY INC IN UNIT
						GROUP 030106 TEEASSEMBLY,FREQUENCY METER			
11		XDHZ		618989	06424	GEAR,DIAL		EA	1
11		XDHZ		0450-016	56232	PIN,STRAIGHT		EA	2
11		XDHZ	5310-00-933-811	MS35338-78	96906	WASHER		EA	5
11		XDHZ		0407-128	56232	SCREW		EA	5
11		XDHZ		0450-065	56232	PIN,STRAIGHT		EA	1
11		XDHZ		878970	56232	SPRING, TEE ASSEMBLY		EA	1
11		XDHZ	5310-00-058-359	MS35335-57	96906	WASHER		EA	2
11		XDHZ		MS35233-12	96906	SCREW		EA	2
11		XDHZ		0404-008	56232	PIN			1
11	1	XDHZ		742565	06424	GEAR ,DUAL SPUR			1
11	1	XDHZ		0W25KS8	73287	WASHER,SPRING			2
11	1	XDHZ		0450-043	56232	PIN,STRAIGHT			
11	1	XDHZ		742562	06424	GEAR,SPUR			1
11	1	XDHZ		MS35233-14	96906	SCREW			2
11	1	XDHZ		MS1025-10	96906	SETSCREW			4
11	1	XDHZ		742566	06424	RAIL ASSEMBLY			1
11	1	XDHZ	315-00-276-467	0450-014	56232	PIN,STRAIGHT			4
11	1	XDHZ		0407-094	56232	SCREW			4
11	1	XDHZ		0164-04	56232	WASHER			4

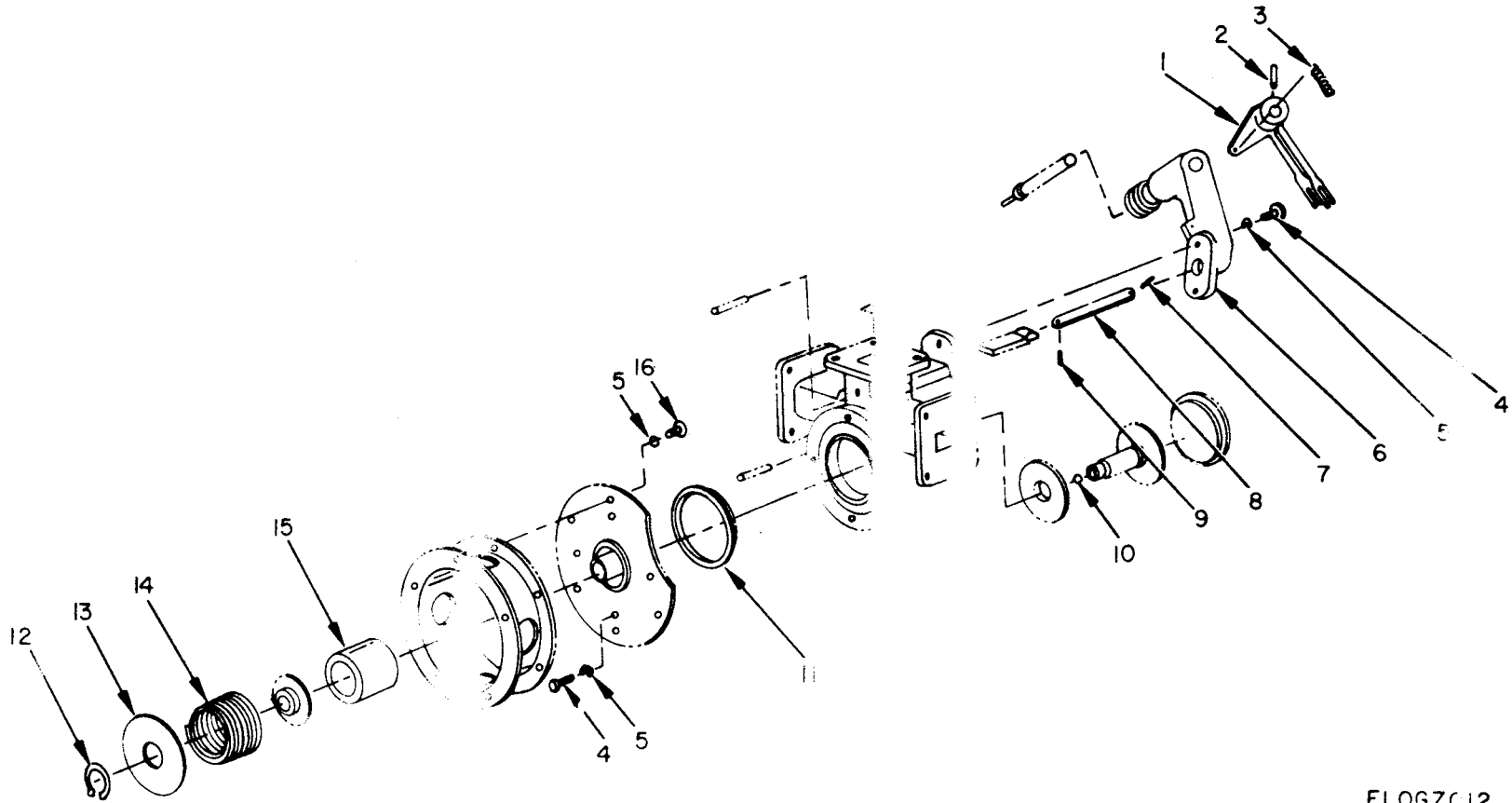


Figure 12. Tee Assembly, Frequency Meter, Exploded View.

ELOGZ012

SECTION II

TM11-6625-917-24P

ILLUSTRATION			NATIONAL STOCK NUMBER	(4)	(5)	(8)	QTY INC IN UNIT
NO	NO	CODE		PART NUMBER	FSCM	DESCRIPTION	
						USABLE ON CODE	
12	1	PAHZZ	6625-00-846-2795	742650	16424	ACTUATOR	
12	2	XDHZZ		MS51017-21	16906	SETScrew	
12	3	PAZZ	5360-00-088-4901	745608	16424	SPRING, TENSION	
12	4	XDHZZ		0407-128	16232	SCREW	
12	5	XDHZZ	5310-00-933-8118	MS35338-78	16906	WASHER	1
12	6	PAHZZ	6625-00-909-0422	742628	16424	ADAPTER	
12	7	XDHZZ		0450-015	16232	PIN, STRAIGHT	
12	8	PAHZZ	6625-00-926-390	879125	16424	SHAFT	
12	9	XDHZZ		0450-007	16232	PIN, STRAIGHT	
12	10	XDHZZ	3110-00-100-616	MS150454	16906	BEARING, BALL	
12	11	XDHZZ		744648-24	16232	PACKING	
12	12	XDHZZ		MS16624-2046	16906	RING, RETAINING	
12	13	XDHZZ		330767	16424	WASHER, FLAT	
12	14	XDHZZ		879055	16424	SPRING, HELICAL	
12	15	PAHZZ	6625-00-088-485	742101	16424	BELLOWS	1
12	16	XDHZZ		0407-126	16232	SCREW	

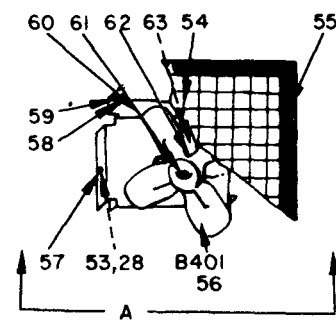
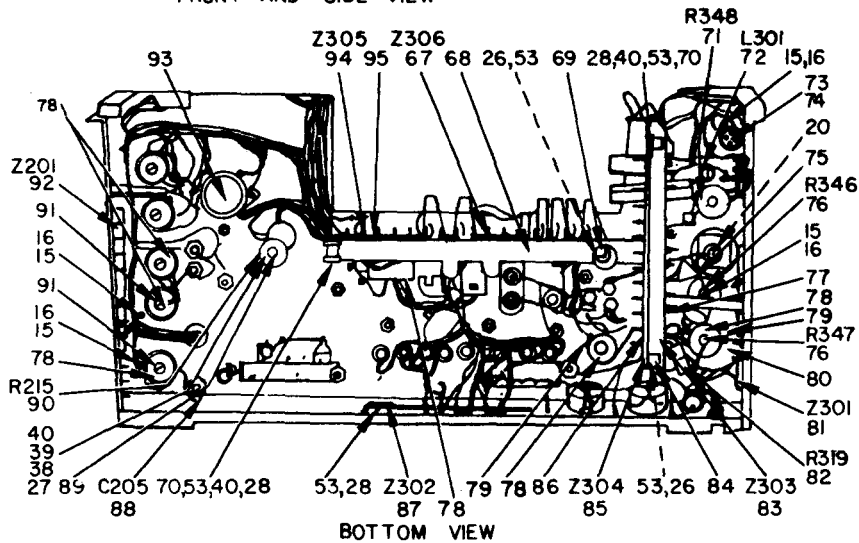
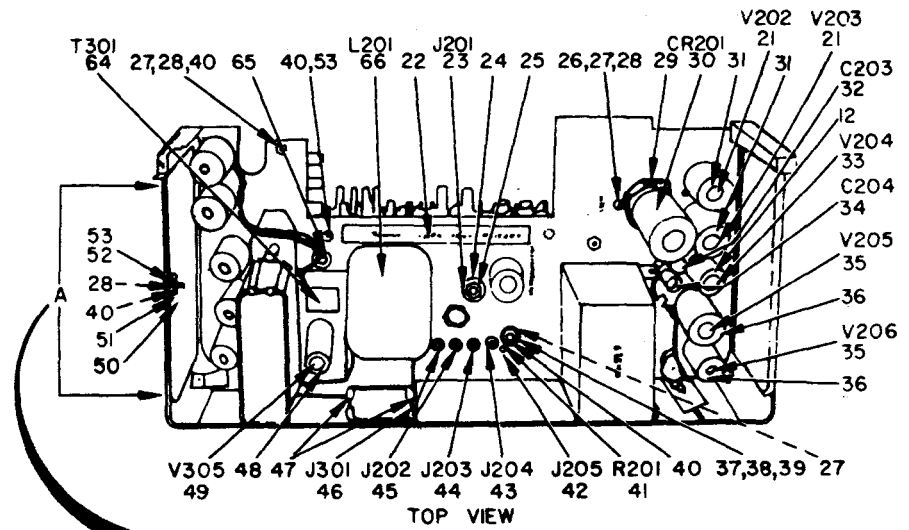
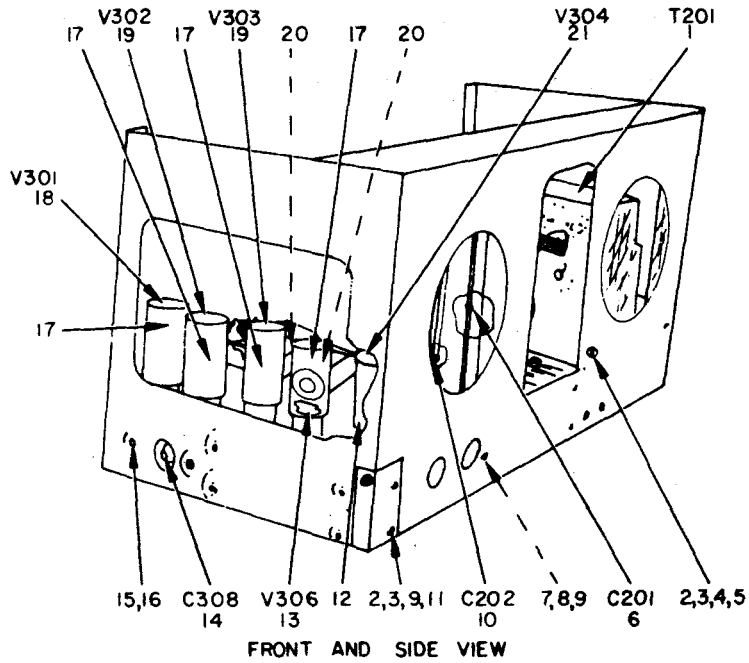


Figure 13. Chassis Assembly.

ELOGZO13

(1) ILLUSTRATION		(2)	(3)	(4)	(5)	(6)	(7)	(8)
(a) FIG NO	(b) ITEM NO.	SMR CODE	NATIONAL STOCK NUMBER	PART NUMBER	FSCM	DESCRIPTION	USABLE ON CODE	QTY INC IN UNIT
						GROUP 0302 CHASSIS ASSEMBLY		
13	1	PAHZZ	5950-00-974-5679	621418	56232	TRANSFORMER	EA	1
13	2	XDHZZ	5305-00-054-6668	MS51957-43	96906	SCREW	EA	5
13	3	XDHZZ	5310-00-614-3552	MS35335-59	96906	WASHER	EA	5
13	4	XDHZZ		0188-8	56232	WASHER	EA	4
13	5	XDHZZ		MS35649-84	96906	NUT	EA	4
13	6	PAHZZ	5910-00-947-8214	CP72B1EG205K1	81349	CAPACITOR, FIXED, PAPER DIELECTRIC	EA	1
13	7	XDHZZ		MS35338-81	96906	WASHER	EA	2
13	8	XDHZZ		0188-9	56232	WASHER	EA	2
13	9	XDHZZ		MS35650-104	96906	NUT	EA	4
13	10	XDHZZ	5910-00-972-3208	CP72E1FG405K1	81349	CAPACITOR, FIXED, PAPER DIELECTRIC	EA	1
13	11	XDHZZ	5310-00-209-1239	MS35335-60	96906	WASHER	EA	2
13	12	PAHZZ	5960-00-686-8085	MS24233-2	96906	SHIELD, ELECTRON TUBE	EA	2
13	13	PAHZZ	5960-00-264-2089	5749-68A6W	81349	ELECTRON TUBE	EA	1
13	14	PAHZZ	5910-00-668-4594	823AN	56232	CAPACITOR, VARIABLE	EA	1
13	15	XDHZZ		MS35233-13	96906	SCREW	EA	36
13	16	XDHZZ	5310-00-058-3599	MS35335-57	96906	WASHER	EA	19
13	17	PAHZZ	5960-00-686-8118	MS24233-4	96906	SHIELD, ELECTRON TUBE	EA	4
13	18	PAHZZ	5960-00-752-5892	12AT7WB1097A	81349	ELECTRON TUBE	EA	1
13	19	PAHZZ	5960-00-262-0210	5814A	81349	ELECTRON TUBE	EA	2
13	20	PAHZZ	5935-00-222-9828	TS103001	81349	SOCKET, ELECTRON TUBE	EA	3
13	21	PAHZZ	5960-00-577-3078	5687WA	81349	ELECTRON TUBE	EA	3
13	22	XDHZZ		745693-2	06424	MARKER, IDENTIFICATION	EA	1
13	23	PAHZZ	5935-00-259-2039	C7-205	95238	CONNECTOR, RECEPTACLE, ELECTRICAL	EA	1
13	24	XDHZZ	5935-00-026-9766	XC110	95238	RING	EA	1
13	25	XDHZZ		XC111	95238	NUT	EA	1
13	26	XDHZZ		MS35233-27	96906	SCREW	EA	9
13	27	XDHZZ		MS35338-79	96906	WASHER	EA	9
13	28	XDHZZ		0188-7	56232	WASHER	EA	34
13	29	PAHZZ	5960-00-249-4973	150F1-23D	91506	RETAINER	EA	1
13	30	PAHZZ	5961-00-617-5670	1N1239	84970	SEMICONDUCTOR DEVICE, DIODE	EA	1
13	31	PAHZZ	5960-00-686-8087	MS24233-5	96906	SHIELD, ELECTRON TUBE	EA	2
13	32	XDHZZ		SR196P22494T16	56289	CAPACITOR, FIXED, PAPER DIELECTRIC	EA	1
13	33	PAHZZ	5960-00-681-9802	6AU6WB	81349	ELECTRON TUBE	EA	1
13	34	PAHZZ	5910-00-681-2404	SR196P47394T16	56289	CAPACITOR, FIXED, PAPER DIELECTRIC	EA	1
13	35	PAHZZ	5960-00-624-4718	082WA	81349	ELECTRON TUBE	EA	2
13	36	PAHZZ	5960-00-729-8150	MS24233-3	96906	SHIELD, ELECTRON TUBE	EA	2
13	37	XDHZZ		249525	56232	SCREW	EA	1
13	38	PAHZZ	5310-00-596-4721	310208	56232	WASHER	EA	4
13	39	XDHZZ		0171-12	56232	WASHER	EA	4

(1) ILLUSTRATION		(2)	(3)	(4)	(5)	(6)	(7)	(8)
(a) FIG NO	(b) ITEM NO	SMR CODE	NATIONAL STOCK NUMBER	PART NUMBER	FSCM	DESCRIPTION	U/M	QTY INC IN UNIT
13	40	XDHZZ		MS35649-64	96906	NUT	EA	19
13	41	PAHZZ	5905-00-842-3435	RW32V822	81349	RESISTOR, FIXED, WIRE WOUND	EA	1
13	42	PAHZZ	5935-00-681-5681	MS16108-5C	96906	JACK, TIP	EA	1
13	43	XDHZZ		MS16108-4C	96906	JACK, TIP	EA	1
13	44	PAHZZ	5935-00-687-1093	MS16108-3C	96906	JACK, TIP	EA	1
13	45	PAHZZ	5935-00-539-2045	MS16108-2C	96906	JACK, TIP	EA	1
13	46	PAHZZ	5935-00-755-2703	MS16108-7C	96906	JACK, TIP	EA	1
13	47	PAHZZ	5910-00-668-3075	CP07SA6	81349	RETAINER	EA	2
13	48	PAHZZ	5960-00-686-8119	MS24233-1	96906	SHIELD	EA	1
13	49	PAHZZ	5960-00-262-1357	5654-6AK5W	81349	ELECTRON TUBE	EA	1
13	50	XDHZZ		6540S	82877	CLAMP	EA	4
13	51	PAHZZ	5340-00-985-6633	HP2N	09922	CLAMP, LOOP	EA	1
13	52	XDHZZ		MS35233-30	96906	SCREW	EA	1
13	53	XDHZZ	5310-00-209-1366	MS35335-58	96906	WASHER	5BB EA	35
13	54	XDHZZ		2657538	06424	SCREEN, FAN	5BB EA	1
13	55	PAHZZ	6625-00-855-8362	2657537	06424	FILTER, SCREEN	5BB EA	1
13	56	PAHZZ	4140-00-824-0911	AO-19962	82877	FAN, TUBE AXIAL	5BB EA	1
13	57	XDHZZ		2658069-227	56232	SCREW	5BB EA	4
13	58	XDHZZ	5310-00-550-3715	MS35333-70	96906	WASHER	5BB EA	8
13	59	XDHZZ		MS35233-16	96906	SCREW	5BB EA	8
13	60	XDHZZ		2687292	06424	FAN BRACKET	5BB EA	1
13	61	XDHZZ		2657539	06424	FRAME, FAN	5BB EA	1
13	62	XDHZZ		MS35233-15	96906	SCREW	5BB EA	4
13	63	XDHZZ		CP07SC2	81349	RETAINER	5BB EA	2
13	64	PAHZZ	5950-00-552-0941	606832-2	56232	TRANSFORMER	EA	1
13	65	XDHZZ		AA522	70485	GROMMET, RUBBER	EA	3
13	66	PAHZZ	5950-00-645-9785	RH1585	80089	REACTOR, FILTER	EA	1
13	67	XDHZZ		2658707	06424	RESISTOR BOARD ASSEMBLY Z306	EA	1
13	68	XDHZZ		882796	06424	INSULATOR	EA	1
13	69	XDHZZ		882812	06424	POST	EA	9
13	70	XDHZZ		MS35233-32	96906	SCREW	EA	8
13	71	PAHZZ	5905-00-279-2529	RC426F222J	81349	RESISTOR, FIXED, COMPOSITION	EA	1
13	72	PAHZZ	5950-00-646-0989	837138	56232	COIL, RADIO FREQUENCY	EA	1
13	73	PAHZZ	5305-00-558-4889	MS35233-14	96906	SCREW	EA	8
13	74	PAHZZ	5935-00-225-8917	422-05-11-017	71785	STRAP	EA	3
13	75	PAHZZ	5935-00-259-9850	20K14512	71785	STRAP	EA	3
13	76	PAHZZ	5905-00-192-3991	RC426F623J	81349	RESISTOR, FIXED, COMPOSITION	EA	2
13	77	PAHZZ	5940-00-549-8176	TMT12M	91663	TERMINAL, STUD	EA	3
13	78	PAHZZ	5935-00-260-0516	TS102P01	81349	SOCKET	EA	6
13	79	XDHZZ		MS35233-29			EA	14

SECTION II

TM11-6625-917-24P

ILLUSTRATION		SMR CODE	(3) NATIONAL STOCK NUMBER	(4) PART NUMBER	(5) FSCM	(6) DESCRIPTION USABLE ON CODE	(7) U/M	(8) QTY INC IN UNIT
(a) FIG NO.	(b) ITEM NO.							
13	80	PARZZ	5935-00-201-3099	1060	71785	STRAP	EA	4
13	81	XDRHH		882856	06424	RESISTOR BOARD ASSEMBLY Z301	EA	1
13	82	PARZZ	5905-00-186-3008	MS35043-7	96906	RESISTOR, FIXED, COMPOSITION	EA	1
13	83	XDRHH		882651	06424	RESISTOR BOARD ASSEMBLY Z303	EA	1
13	84	XDRZZ		882813	06424	POST	EA	2
13	85	XDRHH		882720	06424	RESISTOR BOARD ASSEMBLY Z304	EA	1
13	86	XDRZZ		882718	06424	INSULATOR	EA	1
13	87	XDRHH		745649	06424	RESISTOR BOARD ASSEMBLY Z302	EA	1
13	88	PARZZ	5910-00-813-4724	SR196P10494T16	56289	CAPACITOR, FIXED, PAPER DIELECTRIC	EA	1
13	89	XDRZZ		0407-237	56232	SCREW	EA	1
13	90	PARZZ	5905-00-665-6850	RW31V202	81349	RESISTOR, FIXED, WIRE WOUND	EA	1
13	91	XDRZZ		402	71785	STRAP	EA	2
13	92	XDRHH		882839	06424	RESISTOR BOARD ASSEMBLY Z201	EA	1
13	93	PARZZ	5935-00-129-9358	TS101P02	81349	SOCKET	EA	1
13	94	XDRHH		882795	06424	RESISTOR BOARD ASSEMBLY Z305	EA	1
13	95	XDRZZ	5310-00-722-5998	MS15795-805	96906	WASHER	EA	4

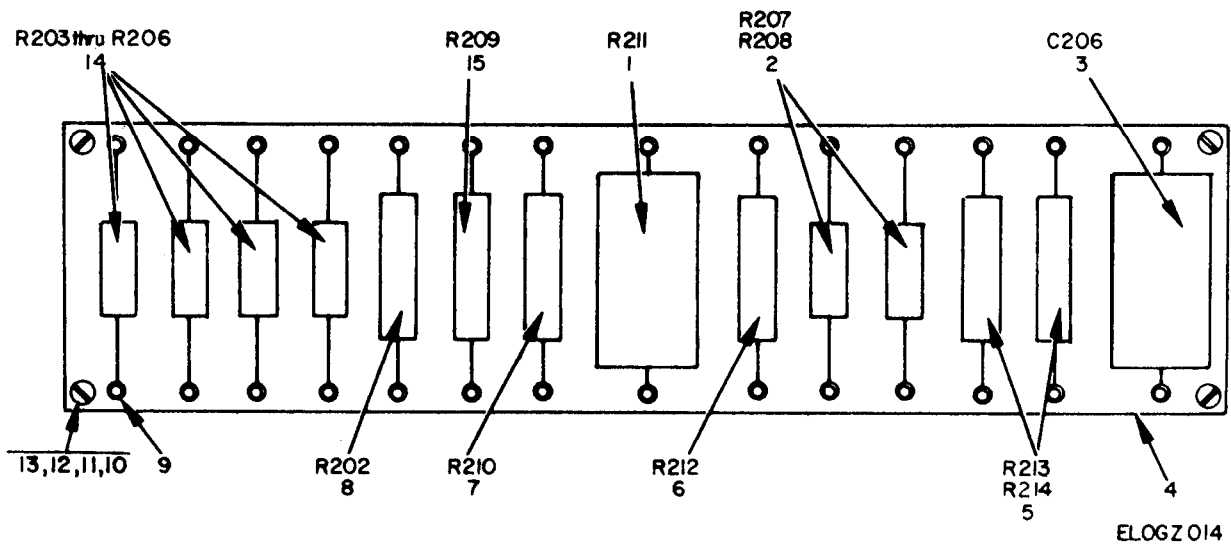


Figure 14. Resistor Board Assembly (Z201).

(1)		(2)	(3)	(4)	(5)	(6)	7	(8)
FIG NO.	ITEM NO.	SMR CODE	NATIONAL STOCK NUMBER	PART NUMBER	FSCM	DESCRIPTION	USABLE ON CODE	QTY INC IN
						GROUP 030201 RESISTOR BOARD ASSEMBLY (Z201)		
14	1	PAHZZ	5905-00-892-6479	RN70D1003F	11349	RESISTOR, FIXED, FILM		1
14	2	PAHZZ	5905-00-299-1999	RC32GF154J	11349	RESISTOR, FIXED, COMPOSITION		2
14	3	KDHZZ		CM35B103J	11349	CAPACITOR, FIXED, MICADIELECTRIC		1
14	4	PAHZZ	6625-00-613-6892	882838	16424	TERMINAL BOARD		1
14	5	PAHZZ	5905-00-256-8355	RC42GF202J	11349	RESISTOR, FIXED, COMPOSITION		2
14	6	PAHZZ	5905-00-071-6598	RN70D1963F	11349	RESISTOR, FIXED, FILM		1
14	7	PAHZZ	5905-00-983-5951	RN70D1623F	11349	RESISTOR, FIXED, FILM		1
14	8	PAHZZ	5905-00-279-2624	RC32GF225J	11349	RESISTOR, FIXED, COMPOSITION		1
14	9	KDHZZ	5940-00-620-8424	MS35431-4	16906	TERMINAL		2
14	10	KDHZZ	5310-00-722-5998	MS15795-805	16906	WASHER		4
14	11	KDHZZ		MS35233-28	16906	SCREW		4
14	12	KDHZZ		MS35338-79	16906	WASHER		4
14	1	KDHZZ		MS35649-64	16906	NUT		4
14	1	PAHZZ	5905-00-247-8732	RCR32G471J8	11349	RESISTOR, FIXED, COMPOSITION		4
14	1	PAHZZ	5905-00-080-1216	RN70D2612F	11349	RESISTOR, FIXED, FILM		1

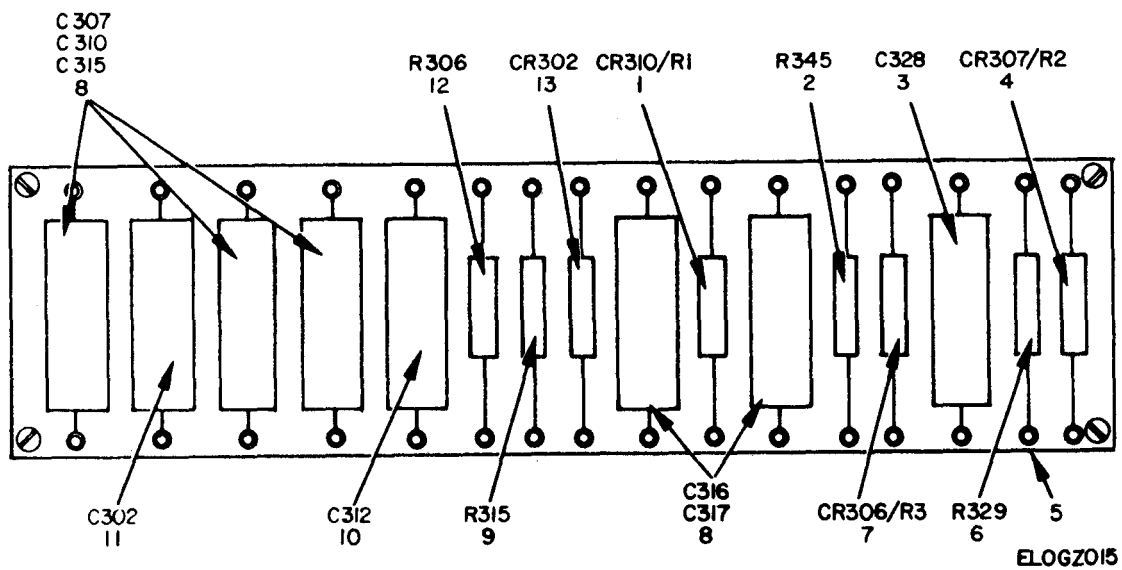


Figure 15. Resistor Board Assembly (Z306).

SECTION II

(1) ILLUSTRATION		(2)	(3)	(4)	(5)	(6)	(7)	(8)
(a) FIG NO.	(b) ITEM NO.	SMR CODE	NATIONAL STOCK NUMBER	PART NUMBER	FSCM	DESCRIPTION USABLE ON CODE	U/M	QTY INC IN UNIT
GROUP 030202 RESISTOR BOARD ASSEMBLY (Z306)								
15	1	PAHZZ	5961-00-985-4900	1N647	81349	SEMICONDUCTOR DEVICE, DIODE 5BB	EA	1
15	1	PAHZZ	5905-00-121-9859	RCR20G106JS	81349	RESISTOR, FIXED, COMPOSITION 5A9, 5BA	EA	1
15	2	PAHZZ	5905-00-279-3509	RC20GF911J	81349	RESISTOR, FIXED, COMPOSITION	EA	1
15	3	XDHZZ		CM15C270JP3	81349	CAPACITOR, FIXED, MICA DIELECTRIC	EA	1
15	4	XDHZZ		1N3033B	81349	SEMICONDUCTOR DEVICE, DIODE 5BB	EA	1
15	4	PAHZZ	5905-00-104-8331	RCR20G304JS	81349	RESISTOR, FIXED, COMPOSITION 5A9, 5BA	EA	1
15	5	XDHZZ		2658706	06424	TERMINAL BOARD 5BB	EA	1
15	5	XDHZZ		882794	06424	TERMINAL BOARD 5A9, 5BA	EA	1
15	6	PAHZZ	5905-00-195-6761	RC20GF104J	81349	RESISTOR, FIXED, COMPOSITION 5BB	EA	1
15	6	PAHZZ	5905-00-141-0724	RCR20G205JS	81349	RESISTOR, FIXED, COMPOSITION 5A9, 5BA	EA	1
15	7	PAHZZ	5961-00-022-5664	1N914	81350	SEMICONDUCTOR DEVICE, DIODE 5BB	EA	1
15	7	PAHZZ	5905-00-116-8558	RCR20G155JS	81349	RESISTOR, FIXED, COMPOSITION 5A9, 5BA	EA	1
15	8	XDHZZ		CM35B103J	81349	CAPACITOR, FIXED, MICA DIELECTRIC	EA	5
15	9	PAHZZ	5905-00-257-0935	RC20GF432J	81349	RESISTOR, FIXED, COMPOSITION	EA	1
15	10	XDHZZ		CM15B101JN3	81349	CAPACITOR, FIXED, MICA DIELECTRIC	EA	1
15	11	XDHZZ		CM30B102J	81349	CAPACITOR, FIXED, MICA DIELECTRIC	EA	1
15	12	PAHZZ	5905-00-279-1719	RC32GF103J	81349	RESISTOR, FIXED, COMPOSITION	EA	1
15	13	PAHZZ	5961-00-669-6884	JAN1N277	81349	SEMICONDUCTOR DEVICE, DIODE	EA	1

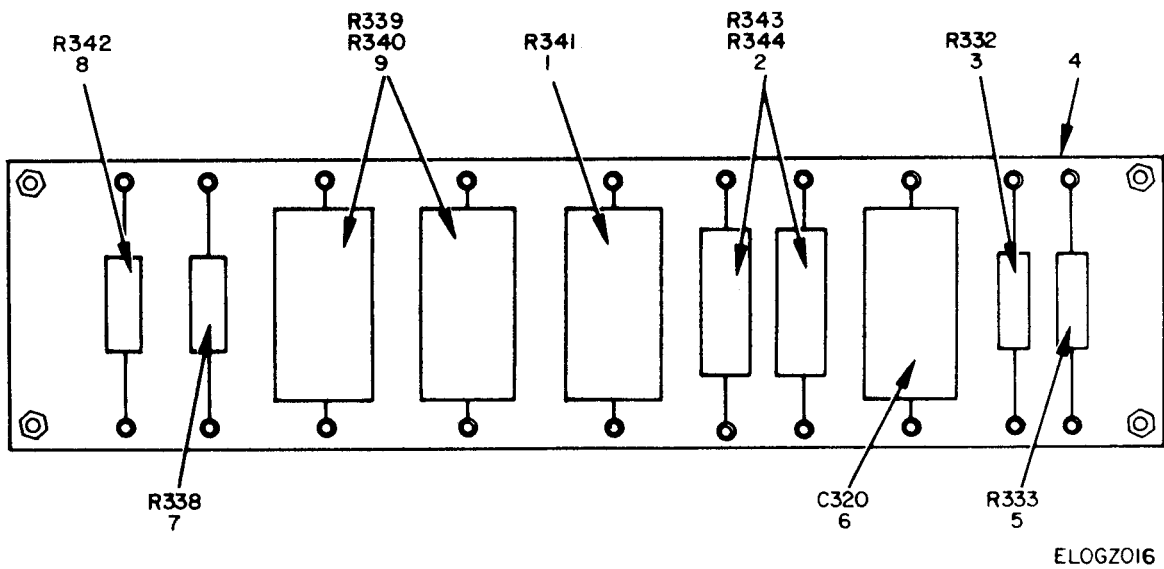


Figure 16. Resistor Board Assembly (Z305).

SECTION II

TM11-6625-917-24P

(1) ILLUSTRATION		(2)	(3)	(4)	(5)	(6)	(7)	(8)
(a) FIG NO.	(b) ITEM NO.	SMR CODE	NATIONAL STOCK NUMBER	PART NUMBER	FSCM	DESCRIPTION USABLE ON CODE	U/M	QTY INC IN UNIT
						GROUP 030203 RESISTOR BOARD ASSEMBLY (2305)		
16	1	PAHZZ	5905-00-552-2451	RN75B1300F	81349	RESISTOR, FIXED, FILM	EA	1
16	2	PAHZZ	5905 -00-190-8867	RC42GF512J	81349	RESISTOR ,FIXED, COMPOSITION	EA	2
16	3	PAHZZ	5905-00-279-3501	RC20GF163J	81349	RESISTOR, FIXED, COMPOSITION	EA	1
16	4	PAHZZ	6625-00-855-1518	745563	06424	TERMINAL BOARD	EA	1
16	5	PAHZZ	5905-00-192-3981	RC20GF124J	81349	RESISTOR, FIXED, COMPOSITION	EA	1
16	6	XDHZZ		CM35B103J	81349	CAPACITOR, FIXED ,MICA DIELECTRIC	EA	1
16	7	PAHZZ	5905 -00-279-1761	RC20GF621J	81349	RESISTOR, FIXED, COMPOSITION	EA	1
16	8	PAHZZ	5905-00-420-7238	RCR32G201JS	81349	RESISTOR, FIXED, COMPOSITION	EA	1
16	9	PAHZZ	5905-00 -577 -0598	RN75B3010F	81349	RESISTOR, FIXED, FILM	EA	2

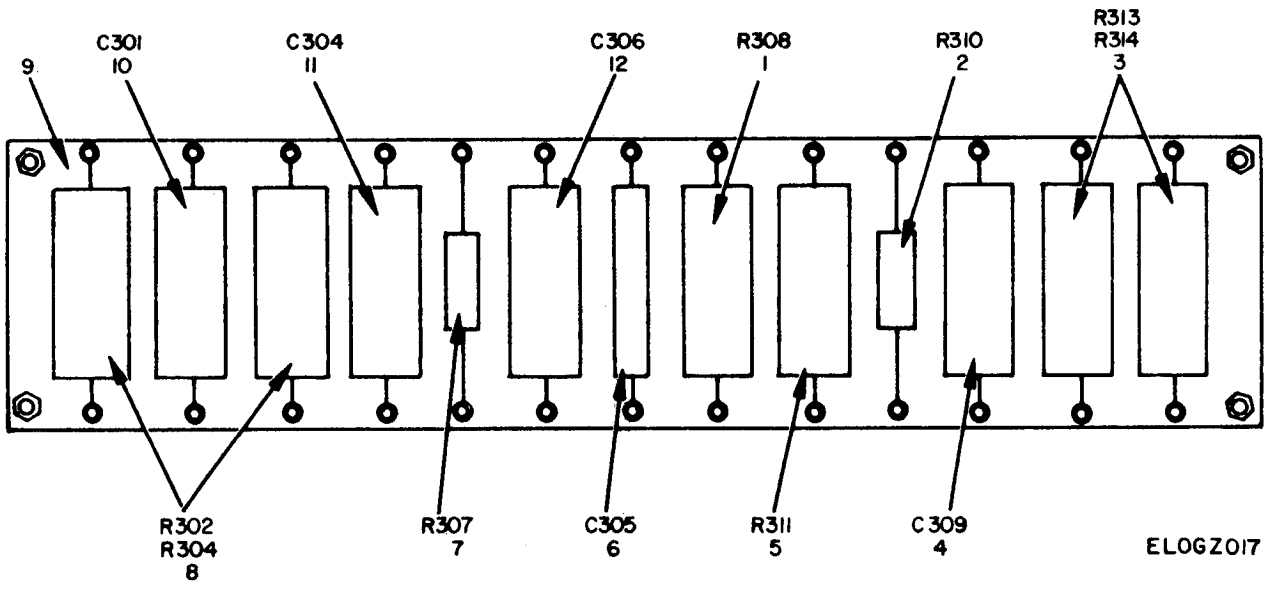
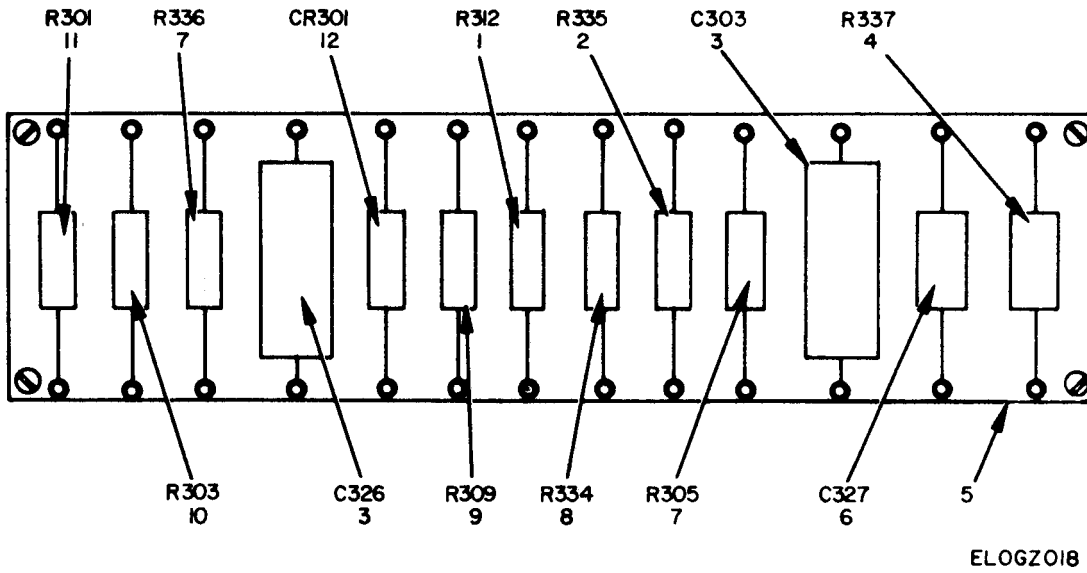


Figure 17. Resistor Board Assembly (Z304).

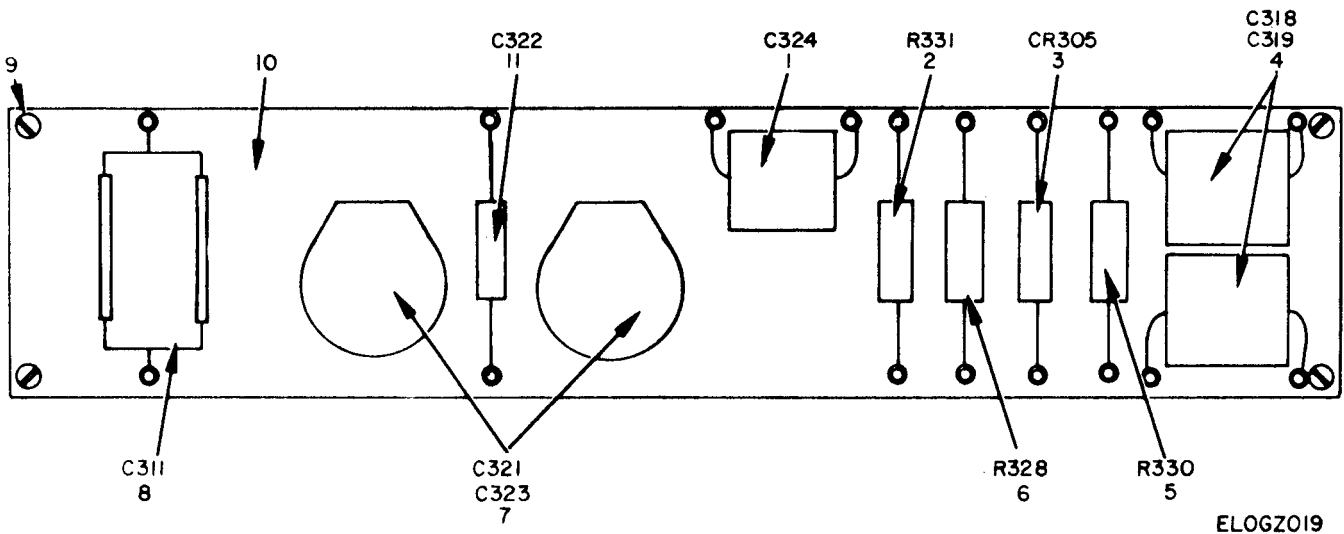
ILLUSTRATION		SMR CODE	(3)	(4)	(5)	(6)	(7)	(8)
(a) FIG NO.	(b) ITEM NO.		NATIONAL STOCK NUMBER	PART NUMBER	FSCM	DESCRIPTION	USABLE ON CODE	U/M
						GROUP 030204 RESISTOR BOARD ASSEMBLY (Z304)		
17	1	PAHZZ	5905-00-171-1977	RC42GF303J	81349	RESISTOR, FIXED, COMPOSITION		EA 1
17	2	PAHZZ	5905-00-279-1751	RC20GF302J	81349	RESISTOR, FIXED, COMPOSITION		EA 1
17	3	PAHZZ	5905-00-192-4504	RC42GF882J	81349	RESISTOR, FIXED, COMPOSITION	5BB	EA 2
17	3	PAHZZ	5905-00-141-0600	RCR20G822JS	81349	RESISTOR, FIXED, COMPOSITION	5A9, 5BA	EA 1
17	4	XDHZZ		CC21UJ050D	96906	CAPACITOR, FIXED, CERAMIC DIELECTRIC		EA 1
17	5	PAHZZ	5905-00-249-4210	RC42GF123J	81349	RESISTOR, FIXED, COMPOSITION		EA 1
17	6	PAHZZ	5910-00-883-5772	CM15B750JN3	81349	CAPACITOR, FIXED, MICA DIELECTRIC		EA 1
17	7	PAHZZ	5905-00-185-8516	RC42GF103J	81349	RESISTOR, FIXED, COMPOSITION		EA 1
17	8	PAHZZ	5905-00-249-3642	RC42GF393J	81349	RESISTOR, FIXED, COMPOSITION		EA 2
17	9	PAHZZ	5940-00-855-8424	882719	06424	TERMINAL BOARD		EA 1
17	10	XDHZZ		CM30B102J	81349	CAPACITOR, FIXED, MICA DIELECTRIC		EA 1
17	11	XDHZZ		CM30B112J	81349	CAPACITOR, FIXED, MICA DIELECTRIC		EA 1
17	12	XDHZZ		CM35B103J	81349	CAPACITOR, FIXED, MICA DIELECTRIC		EA 1



ELOGZO18

Figure 18. Resistor Board Assembly (Z303).

(1) ILLUSTRATION (a) FIG NO	(2) TYP (b) ITEM NO	(3) SMR CODE	(4) NATIONAL STOCK NUMBER	(5) PART NUMBER	(6) FSCM	(6) DESCRIPTION	(7) USABLE ON CODE	(8) QTY INC IN UNIT
						GROUP 030205 RESISTOR BOARD ASSEMBLY (Z303)		
18	1	PAHZZ	5905 -00-192-C	RC20GF203J	31349	RESISTOR, FIXED, COMPOSITION		A 1
18	2	PAHZZ	5905 -00-171-2	RC20GF204J	31349	RESISTOR, FIXED, COMPOSITION		A 1
18	3	XDHZZ		CM35B103J	31349	CAPACITOR, FIXED, MICA DIELECTRIC		A 2
18	4	PAHZZ	5905 -00-279-2	RC32GF433J	31349	RESISTOR, FIXED, COMPOSITION		A 1
18	5	XDHZZ		882652	06424	TERMINAL BOARD		A 1
18	6	PAHZZ	5910- 00-100-8	CM30B202J	31349	CAPACITOR, FIXED, MICA DIELECTRIC		A 1
18	7	PAHZZ	5905-00-279-1	RC32GF103J	31349	RESISTOR, FIXED, COMPOSITION		A 2
18	8	XDHZZ		RC20GF135J	31349	RESISTOR, FIXED, COMPOSITION	5BB	A 1
18	8	PAHZZ	5905-00 -104-5	RCR20G105JS	31349	RESISTOR, FIXED, COMPOSITION	5A9, 5BA	A 1
18	9	PAHZZ	5905-00-279-2	RC42GF222J	31349	RESISTOR, FIXED, COMPOSITION		A 1
18	10	PAHZZ	5905 -00-279-2	RC20GF514J	31349	RESISTOR, FIXED, COMPOSITION		A 1
18	11	PAHZZ	5905 -00-279-2	RC20GF511J	31349	RESISTOR, FIXED, COMPOSITION		A 1
18	12	PAHZZ	5961 -00-669-6	JAN1N277	31349	SEMICONDUCTOR DEVICE, DIODE		A 1



ELOGZ019

Figure 19. Resistor Board Assembly (Z302).

SECTION II

TM11-6625-917-24P

(1) ILLUSTRATION	(2) SMR CODE	(3) NATIONAL STOCK NUMBER	(4) PART NUMBER	(5) FSCN	(6) DESCRIPTION	(6) USABLE ON CODE	(8) QTY INC IN UNIT
					GROUP 030206 RESISTOR BOARD ASSEMBLY (Z302)		
19	1	PAHZZ 5910-00-101- 5789	CM30D222J	81349	CAPACITOR, FIXED,MICA DIELECTRIC		1
19	2	PAHZZ 5905-00-192-3978	RC20GF303J	81349	RESISTOR, FIXED, COMPOSITION		1
19	3	PAHZZ 5961-00-669-6884	JAN1N277	81349	SEMICONDUCTOR DRIVE , DIODE		1
19	4	XDHZZ	CM35B103J	81349	CAPACITOR, FIXED,MICA DIELECTRIC		2
19	5	PAHZZ 5905-00-299-2022	RC32GF223J	81349	RESISTOR, FIXED, COMPOSITION		1
19	6	PAHZZ 5905-00-171-2006	RC20GF271J	81349	RESISTOR, FIXED, COMPOSITION		1
19	7	PAHZZ 5910-00-668-4594	823AN	56231	CAPACITOR ,VARIABLE		2
19	8	XDHZZ	CP08ALKE104K3	81349	CAPACITOR, FIXED,PAPER DIELECTRIC		1
19	9	XDHZZ	MS3 5233-13	96906	SCREW		4
19	10	PAHZZ 5940-00-855-8418	745648	06424	TERMINAL BOARD		1
19	11	XDHZZ	CM15C331JN3	81349	CAPACITOR, FIXED,MICA DIELECTRIC		1

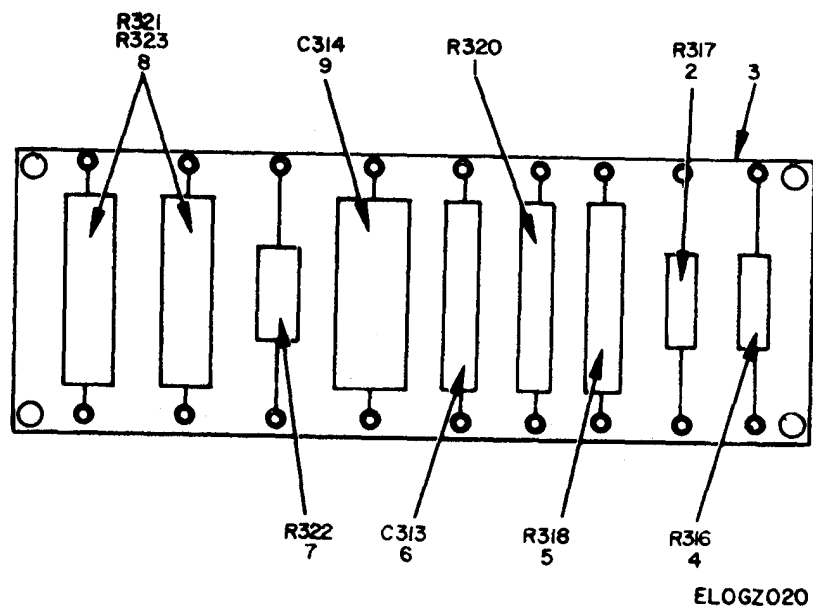
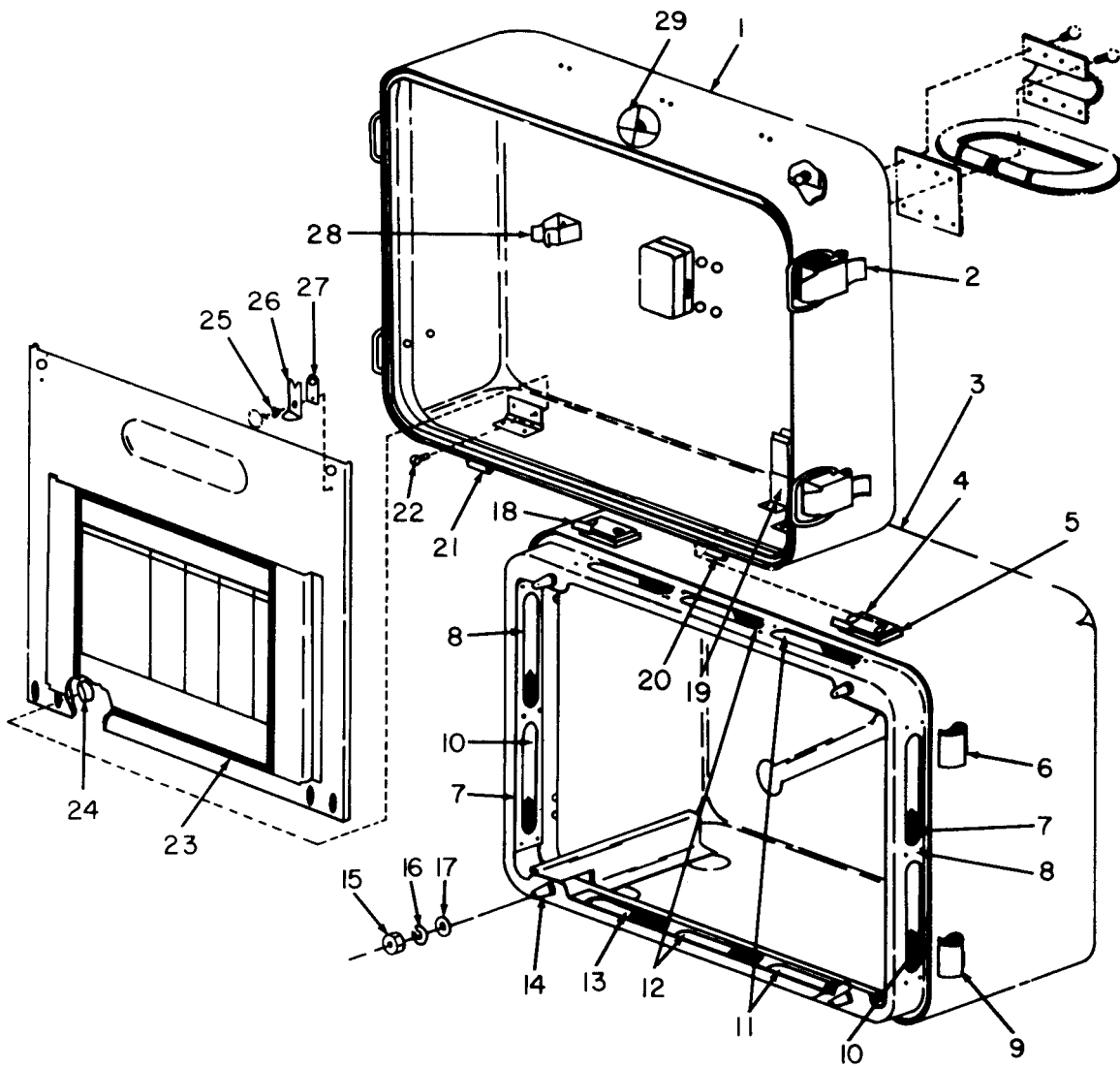


Figure 20. Resistor Board Assembly (Z301).

SECTION II

(1) ILLUSTRATION (a) FIG NO.		(2) SMR CODE	(3) NATIONAL STOCK NUMBER	(4) PART NUMBER	(5) SCM	DESCRIPTION USABLE ON CODE	(8) QTY INC IN UNIT
20	1	DHZZ		IC20GF135J	1349	CROUP 030207 RESISTOR BOARD ASSEMBLY (Z301) RESISTOR, FIXED, COMPOSITION 5BB	1
20	1	AHZZ	5905-00-104-5756	ICR20G105JS	1349	RESISTOR, FIXED, COMPOSITION 5A9, 5BA	1
20		AHZZ	5905-00-195-6761	IC20GF104J	1349	RESISTOR, FIXED, COMPOSITION	1
20	3	AHZZ	5940-00-855-1521	182855	3424	TERMINAL BOARD	1
20	4	AHZZ	5905-00-192-3981	IC20GF124J	1349	RESISTOR, FIXED, COMPOSITION	1
20	5	AHZZ	5905-00-279-1718	IC32GF822J	1349	RESISTOR, FIXED, COMPOSITION	1
20	6	AHZZ	5910-00-636-2154	M15C510G	1349	CAPACITOR, FIXED, MICA DIELECTRIC	1
20	7	AHZZ	5905-00-279-3521	IC20GF150J	1349	RESISTOR, FIXED, COMPOSITION	1
20	8	AHZZ	5905-00-192-0651	IC42GF203J	1349	RESISTOR, FIXED, COMPOSITION	2
20	9	DHZZ		M35B103J	1349	CAPACITOR, FIXED, MICA DIELECTRIC	1



ELOGZ021

Figure 21. Case Assembly, Transit.

SECTION II

TM11-6625-917-24P

ILLUS (a) FIG NO	(1) TION (b) NO	(2) SMR CODE	(3) NATIONAL STOCK NUMBER	(4) PART NUMBER	(5) FSCM	(6) DESCRIPTION USABLE ON CODE	(7) J/M	(8) QTY INC IN UNIT
						GROUP 04 CASE ASSEMBLY, TRANSIT		
21	1	PAHZZ	6625-00-088-4878	2686013	06424	COVER ASSEMBLY	EA	1
21	2	XDHZZ		VHC208LE	98003	CATCH , CLAMPING	EA	4
21	3	PAHZZ	662 5-00-088-4881	2686012	06424	CASE ASSEMBLY	EA	1
21	4	XDHZZ		243539-1	56232	HINGE, CASE	EA	1
21	5	XDHZZ		228982	56232	SPACER , HINGE	EA	1
21	6	XDHZZ		235936	56232	BLOCK, CATCH	EA	4
21	7	PAHZZ	4130-00-783-6298	2657504	06424	FILTER, SCREEN	EA	2
21	8	XDHZZ		2657501	06424	FRAME , SCREEN	EA	2
21	9	XDHZZ		HS208CE	98003	CATCH, CLAMPING	EA	4
21	0	XDHZZ		840648	56232	SCREEN , CASE	EA	2
21	11	PAHZZ	4130-00-783-6277	2657503	06424	FILTER, SCREEN	EA	2
21	12	XDHZZ		2657499	06424	FRAME , SCREEN	EA	2
21	13	XDHZZ		840647	56232	SCREEN, CASE	EA	1
21	14	PAHZZ	5325-00-880-8024	2657498	06424	STUD, SNAPSLIDE	EA	4
21	15	XDHZZ	5310 -00-989-0908	MS35691-3	96906	NUT	EA	4
21	16	XDHZZ		MS35338-82	96906	WASHER	EA	4
21	17	XDHZZ		0188-11	56232	WASHER	EA	4
21	18	XDHZZ		236363-1	56232	HINGE, CASE	EA	1
21	19	XDHZZ		878414	56232	CLAMP, CABLE	EA	1
21	20	XDHZZ		243539-2	56232	HINGE, CASE	EA	1
21	21	XDHZZ		236363-2	56232	HINGE, CASE	EA	1
21	22	XDHZZ		MS35233-28	96906	SCREW	EA	4
21	23	XDHZZ		2657570	06424	MARKER, IDENTIFICATION	EA	1
21	24	XDHZZ		MS20365D632A	96906	NUT	EA	4
21	25	XDHZZ		A105-12	80813	WASHER	EA	2
21	26	XDHZZ		SCD2024	00781	LATCH, SNAPSLIDE	EA	2
21	27	PAHZZ	5325 -00-276-7808	4750	00781	LATCH GUIDE	EA	2
21	28	PAHZZ	5340-00-880-7823	878413	06424	CLAMP, CABLE	EA	6
21	29	XDHZZ		TA320	01347	VALVE, RELIEF	EA	1

NATIONAL STOCK NUMBER AND PART NUMBER INDEX

NOTE : LATEST NATIONAL STOCK NUMBER ASSIGNMENTS ARE INCLUDED AT END OF INDEX

STOCK NUMBER	FIGURE NO.	ITEM NO.	STOCK NUMBER	FIGURE NO.	ITEM NO.
6625-00-012-3101	1	8	5905-00-279-3511	4	73
5961-00-022-5664	15	7	5905-00-279-3511	18	11
5935-00-026-9766	13	24	5905-00-279-3521	20	7
5935-00-043-0579	3	1	5935-00-280-1936	3	3
5305-00-054-5636	4	72	5305-00-282-8902	4	52
5305-00-054-6668	13	2	5905-00-284-3049	6	5
5310-00-058-3599	4	22	5905-00-299-1999	14	2
5310-00-058-3599	11	7	5905-00-299-2022	19	5
5310-00-058-3599	13	16	5905-00-299-2056	16	
5905-00-071-6598	14	6			2
5905-00-080-1216	14	15	5915-00-501-4299	6	8
5330-00-088-4869	4	42	5995-00-503-0470	1	7
5330-00-088-4872	4	83	5985-00-504-7777	1	4
5330-00-088-4874	4	90	5975-00-513-2712	4	54
6625-00-088-4878	21	1	3010-00-528-8229	4	14
6625-00-088-4881	21	3	5935-00-539-2045	13	45
6625-00-088-4883	3	5	5905-00-539-4900	4	66
6625-00-088-4887	9	5	6625-00-539-8212	4	27
6625-00-088-4892	8	9	5365-00-540-8793	4	92
6625-00-088-4898	12	15	5905-00-542-9981	4	67
5360-00-088-4901	12	3	5310-00-543-2739	4	82
5330-00-088-4904	5	25	5940-00-549-8176	4	57
6625-00-088-4905	5	27	5940-00-549-8176	13	77
3110-00-100-6162	12	10	5310-00-550-3715	4	49
5910-00-100-8045	18	6	5310-00-550-3715	13	58
5910-00-101-5789	19	1	5950-00-552-0941	13	64
5935-00-129-9358	13	93	5905-00-552-2265	4	70
5905-00-171-1977	17	1	5905-00-552-2451	16	1
5905-00-171-2003	18	2	5905-00-552-5478	4	30
5905-00-171-2006	4	68	6210-00-553-1169	4	88
5905-00-171-2006	19	6	5985-00-553-5527	1	2
5905-00-185-8516	17	7	5961-00-553-7135	8	2
5315-00-187-3228	9	14	5365-00-554-8486	4	16
5905-00-190-8867	16	2	5985-00-556-0932	1	3
5905-00-192-0649	18	1	5355-00-559-8943	4	53
5905-00-192-0651	20	8	5905-00-577-0598	16	9
5905-00-192-3978	19	2	5960-00-577-3078	13	21
5905-00-192-3981	16	5	5310-00-595-6211	4	39
5905-00-192-3981	20	4	5310-00-596-4721	13	38
5905-00-192-3991	13	76	6625-00-609-3795	5	49
5905-00-192-4504	17	3	6625-00-611-5614	5	37
5905-00-195-6761	15	6	6625-00-613-6892	14	4
5905-00-195-6761	20	2	5310-00-614-3552	13	3
5935-00-199-2657	3	4	5310-00-616-3555	4	33
5935-00-201-3099	13	80	5355-00-616-7669	4	60
5310-00-209-1239	13	11	5961-00-617-5670	13	30
5310-00-209-1366	4	5	5310-00-619-1148	4	41
5310-00-209-1366	5	42	5940-00-620-8424	14	9
5310-00-209-1366	13	53	6625-00-624-2731	5	50
5935-00-222-9828	13	20	6625-00-624-2733	5	41
5935-00-225-8917	13	74	5960-00-624-4718	13	35
5905-00-249-3642	17	8	6625-00-629-1976	5	48
5905-00-249-4210	17	5	5905-00-630-6933	6	7
5960-00-249-4973	13	29	5950-00-645-9785	13	66
5905-00-256-8355	14	5	5950-00-646-0989	13	72
5905-00-257-0935	15	9	5905-00-646-5992	4	20
			5930-00-655-1575	4	97
5935-00-259-2039	13	23	5905-00-665-6850	13	90
5935-00-259-9850	13	75	5910-00-668-3075	13	47
5935-00-260-0516	13	78	5910-00-668-4594	13	14
5960-00-262-0210	13	19	5910-00-668-4594	19	7
5960-00-262-1357	13	49	5961-00-669-6884	18	12
5960-00-264-2089	13	13	5961-00-669-6884	19	3
5315-00-276-4674	11	17	5910-00-681-2404	13	34
5325-00-276-7808	21	27	5935-00-681-5681	13	42
5905-00-279-1718	20	5	5960-00-681-9802	13	33
5905-00-279-1719	4	74	5960-00-686-8085	13	12
5905-00-279-1719	15	12	5960-00-686-8087	13	31
5905-00-279-1719	18	7	5960-00-686-8118	13	17
5905-00-279-1751	17	2	5960-00-686-8119	13	48
5905-00-279-1761	16	7	5935-00-687-1093	13	44
5905-00-279-2516	18	10	5930-00-689-6786	4	98
5905-00-279-2519	4	75	5310-00-722-5998	13	95
5905-00-279-2529	13	71	5310-00-722-5998	14	10
5905-00-279-2529	18	9	5960-00-729-8150	13	36
5905-00-279-2542	18	4	5935-00-755-2703	13	46
5905-00-279-2624	14	8	5365-00-782-0363	8	1
5905-00-279-3501	16	3	4130-00-783-6277	21	11
5905-00-279-3505	4	76	4130-00-783-6298	21	7
5905-00-279-3509	15	2	5305-00-800-7261	9	4

STOCK NUMBER	FIGURE NO.	ITEM NO.	STOCK NUMBER	FIGURE NO.	ITEM NO.
5305-00-800-7261	10	8	5340-00-880-7823	21	28
5910-00-813-4724	13	88			
5935-00-823-0487	2	1	5325-00-880-8024	21	14
5315-00-823-8754	10	15	5310-00-880-9026	7	5
4140-00-824-0911	13	56	5910-00-883-5772	17	6
5960-00-834-8248	5	10	5905-00-892-6479	14	1
3040-00-836-3143	7	1	5920-00-892-9311	4	96
5970-00-839-8222	5	32	5999-00-902-7572	8	8
5905-00-842-3435	13	41	6625-00-909-0422	12	6
5340-00-843-0003	8	10	6625-00-924-0317	7	2
5340-00-843-0003	10	17	6625-00-924-0318	5	30
5935-00-843-7362	4	78	6625-00-924-0322	4	93
5935-00-843-9008	4	45	6625-00-926-3907	12	8
6625-00-846-2795	12	1	5310-00-933-8118	4	7
6625-00-846-2909	6	1	5310-00-933-8118	5	9
6625-00-846-2910	5	51	5310-00-933-8118	11	3
6625-00-846-2948	5	24	5310-00-933-8118	12	5
6625-00-846-2959	4	35	5355-00-935-3857	4	64
6625-00-855-1518	16	4	5355-00-935-3858	4	28
6625-00-855-1519	4	17	9905-00-935-3859	4	84
5940-00-855-1521	20	3	3110-00-935-5685	9	8
6625-00-855-8362	13	55	5355-00-958-9982	4	69
6625-00-855-8378	10	4	5975-00-965-7612	4	77
6625-00-855-8380	4	1	5950-00-974-5679	13	1
5940-00-855-8418	19	10	5905-00-983-5951	14	7
5940-00-855-8424	17	9	5961-00-985-4900	15	1
5340-00-861-4168	8	7	5360-00-988-1270	10	13
5920-00-877-9934	4	95	6625-00-988-1271	10	14
5325-00-880-7789	4	71	5310-00-989-0908	21	15

PART NUMBER	FSCM	FIG. NO.	ITEM NO.	PART NUMBER	FSCM	FIG. NO.	ITEM NO.
AA522	70485	13	65	LP57XA62J6	03038	10	9
AN3057-10B	88044	3	3	LP57XA62J8	03038	10	12
AT157U	80058	1	4	MS122078	96906	8	10
AO-19962	82877	13	56	MS122078	96906	10	17
A104-1	80813	4	71	MS150454	96906	12	10
A104-3	80813	4	46	MS15795-803	96906	4	39
A104-6-2	80813	4	85	MS15795-805	96906	13	95
A105-12	80813	21	25	MS15795-805	96906	14	10
A27067	92219	4	93	MS15795-808	96906	4	41
BOW25KS8	73287	11	11	MS16108-2C	96906	13	45
BOW25KS8	73287	9	13	MS16108-3C	96906	13	44
CG21UJ05OD	96906	17	4	MS16108-4C	96906	13	43
CG1299U	80058	1	3	MS16108-5C	96906	13	42
CG1303U	80058	1	2	MS16108-7C	96906	13	46
CG409EU	80058	1	7	MS16562-204	96906	5	46
CM15B101JN3	81349	15	10	MS16624-2025	96906	7	4
				MS16624-2046	96906	12	12
CM15B750JN3	81349	17	6	MS16625-2037	96906	7	3
CM15C270JP3	81349	15	3	MS16625-2175	96906	5	5
CM15C331JN3	81349	19	11	MS171437	96906	10	15
CM30B102J	81349	15	11	MS171465	96906	9	11
CM30B102J	81349	17	10	MS20365D632A	96906	21	24
CM30B112J	81349	17	11	MS24233-1	96906	13	48
CM30B202J	81349	18	6	MS24233-2	96906	13	12
CM30D222J	81349	19	1	MS24233-3	96906	13	36
CM35B103J	81349	14	3	MS24233-4	96906	13	17
CM35B103J	81349	15	11	MS24233-5	96906	13	31
CM35B103J	81349	16	6	MS24663	96906	4	78
CM35B103J	81349	17	12	MS3106A18-9P	96906	3	4
CM35B103J	81349	18	3	MS35059-22	96906	4	97
CM35B103J	81349	19	4	MS35168-82E	96906	2	1
CM35B103J	81349	20	9	MS35233-12	96906	4	50
CP07SA6	81349	13	47	MS35233-12	96906	11	8
CP07SC2	81349	13	63	MS35233-13	96906	4	59
CP08AIKE104K3	81349	19	8	MS35233-13	96906	13	15
				MS35233-13	96906	19	9
				MS35233-14	96906	4	61
CX337/U	80058	1	6	MS35233-14	96906	11	14
				MS35233-14	96906	13	73
				MS35233-15	906	4	29
C7-20S	95238	13	23	MS35233-15	96906	13	62
DTMS12J	91663	6	4	MS35233-16	96906	13	59
FHN26G	81349	4	96	MS35233-2	96906	4	72
FO2A250V3AS	81349	4	95	MS35233-25	96906	4	86
HP2N	09922	13	51	MS35233-27	96906	4	11
HS208CE	98003	21	9				
HL268	49673	4	54				

PART NUMBER	FSCM	FIG. NO.	ITEM NO.	PART NUMBER	FSCM	FIG. NO.	ITEM NO.
MS35233-27	96906	13	26	RC20GF511J	81349	18	11
MS35233-28	96906	4	8	RC20GF514J	81349	18	10
MS35233-28	96906	5	43	RC20GF621J	81349	16	7
MS35233-28	96906	14	11	RC20GF911J	81349	15	2
MS35233-28	96906	21	22	RC32GF103J	81349	4	74
MS35233-29	96906	4	65	RC32GF103J	81349	15	12
MS35233-29	96906	13	79	RC32GF103J	81349	18	7
MS35233-30	96906	13	52	RC32GF154J	81349	14	2
MS35233-32	96906	13	70				
MS35233-4	96906	10	7	RC32GF223J	81349	19	5
MS35233-44	96906	4	81	RC32GF225J	81349	14	8
MS35233-6	96906	4	32	RC32GF433J	81349	18	4
MS35234-62	96906	4	40				
MS35249-24	96906	4	12	RC32GF822J	81349	20	5
MS35333-70	96906	4	49	RC42GF103J	81349	17	7
MS35333-70	96906	13	58	RC42GF123J	81349	17	5
MS35333-71	96906	4	33	RC42GF202J	81349	14	5
MS35333-72	96906	4	82	RC42GF203J	81349	20	8
MS35333-57	96906	4	22	RC42GF222J	81349	13	71
MS35333-57	96906	11	7	RC42GF222J	81349	18	9
MS35333-57	96906	13	16	RC42GF303J	81349	17	1
MS35333-58	96906	4	5	RC42GF393J	81349	17	8
MS35333-58	96906	5	42	RC42GF512J	81349	16	2
MS35333-58	96906	13	53	RC42GF623J	81349	13	76
MS35333-59	96906	13	3	RC42GF882J	81349	17	3
MS35333-60	96906	13	11	RH1585	80089	13	66
MS35338-77	96906	4	47	RN70D1003F	81349	14	1
MS35338-77	96906	6	3	RN70D1623F	81349	14	7
MS35338-77	96906	8	4	RN70D1963F	81349	14	6
MS35338-77	96906	10	6	RN70D2612F	81349	14	15
MS35338-78	96906	4	7	RN75B1300F	81349	16	1
MS35338-78	96906	5	9	RN75B3010F	81349	16	9
MS35338-78	96906	11	3	RV4NAYS8252A	81349	4	20
MS35338-78	96906	12	5	RV4NAYS8102A	81349	4	30
MS35338-79	96906	4	24	RV4NAYS8105A	81349	4	70
MS35338-79	96906	5	24	RV4NAYS8503A	81349	4	66
MS35338-79	96906	10	11	RV4NAYS8505A	81349	4	67
MS35338-79	96906	13	27	RW31V202	81349	13	90
MS35338-79	96906	14	12	RW32V822	81349	13	41
MS35338-81	96906	4	87	SCD2024	00781	21	26
MS35338-81	96906	13	7	SRI96P10494T16	56289	13	88
MS35338-82	96906	21	16	SRI96P22494T16	56289	13	32
MS35431-4	96906	14	9	SRI96P47394T16	56289	13	34
MS35649-44	96906	4	6	SR7P2	28520	4	77
MS35649-64	96906	4	3	SS4CP25L0-1	40920	9	8
MS35649-64	96906	5	39	STYLE1638	91354	3	2
MS35649-64	96906	13	40	TA320	01347	21	29
MS35649-64	96906	14	13	TMT12M	91663	4	57
MS35649-84	96906	13	5	TMT12M	91663	13	77
MS35650-104	96906	13	9	TS101P02	81349	13	93
				TS102P01	81349	13	78
MS51017-20	96906	4	18	TS103C01	81349	13	20
MS51017-21	96906	12	2	TS1335AUPM29B	80058	1	8
MS51017-3	96906	5	34	TS729B/UPM29A	80058	1	8
MS51021-25	96906	4	52	UG1094AU	81349	4	45
MS51021-9	96906	9	4	VHC208LE	98003	21	2
MS51021-9	96906	10	8	882147	06424	5	23
MS51025-10	96906	11	15	XC110	95238	13	24
MS51026-16	96906	6	9	XC111	95238	13	25
MS51957-43	96906	13	2	OB2WA	81349	13	35
MS91528-2K2B	96906	4	53	0164-04	56232	11	19
NE51	81349	4	89	0171-12	56232	13	39
				0188-11	56232	21	17
RC20GF104J	81349	15	6	0188-7	56232	4	4
RC20GF104J	81349	20	2	0188-7	56232	5	19
RC20GF124J	81349	16	5	0188-7	56232	13	28
RC20GF124J	81349	20	4	0188-8	56232	13	4
RC20GF135J	81349	18	8	0188-9	56232	13	8
RC20GF135J	81349	20	1	823AN	56232	19	7
RC20GF150J	81349	20	7	823AN	56232	13	14
RC20GF163J	81349	16	3	0343-343	56232	2	2
RC20GF203J	81349	18	1	0404-008	56232	11	9
RC20GF204J	81349	18	2	0404-009	56232	9	14
RC20GF271J	81349	4	68	0407-060	56232	6	6
RC20GF271J	81349	19	6	0407-062	56232	8	3
RC20GF302J	81349	17	2	0407-064	56232	8	11
RC20GF303J	81349	19	2	0407-094	56232	11	18
RC20GF334J	81349	4	75	0407-126	56232	12	16
RC20GF392J	81349	4	76	0407-128	56232	11	4
RC20GF432J	81349	15	9	0407-128	56232	12	4
RC20GF511J	81349	4	73				

PART NUMBER	FSCM	FIG. NO.	ITEM NO.	PART NUMBER	FSCM	FIG. NO.	ITEM NO.
0407-130	56232	5	8				
0407-226	56232	10	10	2687273	06424	3	5
0407-231	56232	5	21	2687292	06424	13	60
0407-237	56232	13	89	2687652	06424	4	84
044		5	11	28D1	83186	6	5
0444-220	56232	5	35	290742	06424	8	8
0444-224	56232	5	29	303930	56232	9	7
0444-226	56232	5	38	305805	06424	6	8
0444-228	56232	5	40	310208	56232	13	38
0444-229	56232	5	47	313537	06424	8	7
0446-130	56232	6	11	323713	56232	4	99
0450-007	56232	12	9	330485	06424	7	2
0450-014	56232	11	17	330490	06424	9	17
0450-015	56232	12	7	330490	06424	10	2
0450-016	56232	11	2	330539	06424	10	3
0450-033	56232	10	1	330549	06424	9	1
0450-043	56232	11	12	330767	06424	12	13
0450-065		11	5	331507	06424	5	44
0450-17	06424	5	13	331509	06424	4	9
1-1909M3-5N	91812	4	55	331515	06424	5	20
1N1239	84970	13	30	331516	06424	5	17
JAN1N277	81349	15	13	331517	06424	5	18
JAN1N277	81349	18	12	331528	06424	5	33
JAN1N277	81349	19	3	331593	06424	5	6
1N3033B	81349	15	4	331598	06424	5	22
1N647	81349	15	1	331599	06424	4	15
1N78R	80131	8	2	3502-14-25	78189	7	5
1N914	81350	15	7	39002	76487	4	14
1030	97539	4	98	402	71785	13	91
1060	71785	13	80	422-05-11-017	71785	13	74
				4436YOB	97945	5	36
150F1-23D	91506	13	29	4750	00781	21	27
20K14512	71785	13	75	51E17599	71785	5	12
2102	83330	4	92	5295	74545	3	1
21609	81312	5	2	5619-1	07149	9	16
228982	56232	21	5	5619-1	07149	10	16
235936	56232	21	6	5654-6AK5W	81349	13	49
236363-1	56232	21	18	5687WA	81349	13	21
236363-2	56232	21	21	5749-6BA6W	81349	13	13
2375160	06424	5	4	5814A	81349	13	19
2377736-2	06424	5	10	6WB	81349	13	33
240712	06424	10	13	606832-2	56232	13	64
240713	06424	10	14	616938	06424	5	48
240716	56232	9	12	616939	06424	5	50
240842	56232	9	6	616940	06424	5	28
241724	56232	4	16	617135	06424	5	49
243539-1	56232	21	4	617458	06424	5	41
243539-2	56232	21	20	617912	06424	5	37
249525	56232	13	37	618058	06424	9	15
2600432	06424	6	2	618224	06424	4	19
2605303	064	4	34	618989	06424	11	1
2616517	06424	4	31	621418	56232	13	1
2620901	06424	4	43	654DS	82877	13	50
20906	06424	4	44	673408	06424	6	7
2620931	06424	4	80	673571-235	56232	4	58
2620932	06424	4	79	710997	06424	4	27
2650480-124	06424	4	29	714595-224	56232	4	38
2656829	06424	4	1	720561-1	56232	9	10
2657498	06424	21	14	720561-2	56232	9	2
2657499	06424	21	12	741812	06424	5	45
2657501	06424	21	8	741910	06424	10	4
2657503	06424	21	11	741916	06424	1	5
2657504	06424	21	7	742009	06424	9	6
2657527-1	06424	4	90	742101	06424	12	15
2657527-2	06424	4	42	742562	06424	11	13
2657527-3	06424	4	83	742565	06424	11	10
2657537	06424	13	55	742566	06424	11	16
2657538	06424	13	54	742628	06424	12	6
2657539	06424	13	61	742650	06424	12	1
2657570	06424	21	23	744648-24	56232	12	11
2657980	06424	4	51	744734	06424	5	14
2658069-227	56232	4	37	744735-2	06424	5	15
2658069-227	56232	13	57	744745	06424	5	31
2658069-232	56232	4	91	744750	06424	4	10
2658706	06424	15	5	744789	06424	5	26
2658707	06424	13	67	745563	06424	16	4
2685280-1	06424	4	94	745591	06424	6	1
2685295	06424	4	36	745608	06424	12	3
2686012	06424	21	3	745648	06424	19	10
2686013	06424	21	1	745649	06424	13	87
2686014	06424	1	1	745693-2	06424	13	22
2686059	06424	4	2	747241	06424	5	51

NATIONAL STOCK NUMBER AND PART NUMBER INDEX

SECTION IV

PART NUMBER	FSCM	FIG. NO.	ITEM NO.	PART NUMBER	SECTION IV		
					FSCM	FIG. NO.	ITEM NO.
823957-060	56232	9	9	882113	06424	4	48
823957-064	56232	9	3	882114	06424	4	64
83152	01121	4	63	882115	06424	4	56
837138	56232	13	72	882150	06424	4	25
840647	56232	21	13	882151	06424	4	21
840648	56232	21	10	882162	06424	4	35
842108	06424	8	5	882321	06424	6	10
846017	56232	10	9	882468	06424	4	28
877797	06424	4	17	882651	06424	13	83
878251	06424	7	1	882652	06424	18	5
878413	06424	21	28	882718	06424	13	86
878414	56232	21	19	882719	06424	17	9
878474	06424	8	5	882720	06424	13	85
878475	06424	8	1	882786	06424	5	25
878477	06424	8	6	882795	06424	13	94
878970	56232	11	6	882796	06424	13	68
879055	06424	12	14	882812	06424	13	69
879125	06424	12	8	882813	06424	13	84
881822	06424	5	32	882838	06424	14	4
881838	06424	5	7	882839	06424	13	92
881840	06424	4	13	882855	06424	20	3
881841	06424	4	62	882856	06424	13	81
881853	06424	5	30	90-2-2G	49956	4	60
881898	06424	5	27	90-2WD2G	49956	4	69
881903	06424	5	16	95408-931-56K	72619	4	88
882112	06424	4	26				

LATEST NATIONAL STOCK NUMBER AND PART NUMBER ASSIGNMENTS

STOCK NUMBER	FIG. NO.	ITEM NO.
5905-00-104-5756	18	8
5905-00-104-5756	20	1
5905-00-104-8331	15	4
5905-00-104-8339	4	76
5905-00-114-5401	4	75
5905-00-116-8558	15	7
5905-00-121-9859	15	1
5905-00-141-0600	17	3
5935-00-201-2774	3	4
5935-00-259-7459	3	1
5935-00-295-3329	5	3
5905-00-414-0724	15	6
5905-00-420-7238	16	8
5305-00-558-4889	13	73
5995-00-577-3470	1	6
6625-00-624-2734	5	2
5995-00-823-2588	1	6
5310-00-860-4923	8	7
5935-00-891-6957	5	1
5910-00-972-3208	13	10

PART NUMBER	FSCM	FIG. NO.	ITEM NO.
CP72E1FG405K1	81349	13	10
CX3135/U	80058	1	6
F7078	78001	3	1
MS35233-6	96906	4	32
MS35691-3	96906	21	15
M7PLSN	81312	5	1
RCR20G105JS	81349	18	8
RCR20G105JS	81349	20	1
RCR20G106JS	81349	15	1
RCR20G155JS	81349	15	7
RCR20G205JS	81349	15	6
RCR20G244JS	81349	4	75
RCR20G304JS	81349	15	4
RCR20G822JS	81349	17	3
RCR20G824JS	81349	4	76
RCR32G201JS	81349	16	8
XT,3-1.3N	71468	5	3
18093	94033	3	4
882147	06424	5	23
882794	06242	15	5
0444-226	56232	5	35

ADDITIONAL LATEST NATIONAL STOCK NUMBER AND PART NUMBER ASSIGNMENTS

STOCK NUMBER		FIG . NO.	ITEM NO.
5905-00-186-3008		13	82
5905-00-247-8732		14	14
5910-00-636-2154		20	6
5960-00-752-5892		13	18
5910-00-947-8214		13	6
5340-00-985-6633		13	51
5360-00-988-1268		9	6

PART NUMBER	FSCM	FIG . NO.	ITEM NO.
CML5C510G	81349	20	6
CP72B1EG205K1	81349	13	6
MS35043-7	96906	13	82
RCR32G471JS	81349	14	14
12AT7WB1097A	81349	13	18



SOMETHING WRONG WITH THIS MANUAL?

THEN... JOT DOWN THE DOPE ABOUT IT ON THIS FORM, TEAR IT OUT, FOLD IT AND DROP IT IN THE MAIL!

FROM: (YOUR UNIT'S COMPLETE ADDRESS)

Commander
Stateside Army Depot
ATTN: AMSTA-US
Stateside, H.J. 97703

DATE 10 July 1975

PUBLICATION NUMBER

TM 11-5840-340-12

DATE

23 Jan 74

TITLE

Radar Set AN/SPS-76

BE EXACT... PIN-POINT WHERE IT IS

PAGE NO.	PARA-GRAPH	FIGURE NO.	TABLE NO.
----------	------------	------------	-----------

2-25	2-28		
------	------	--	--

3-10	3-3		
------	-----	--	--

5-6	5-8		
-----	-----	--	--

F03

IN THIS SPACE TELL WHAT IS WRONG AND WHAT SHOULD BE DONE ABOUT IT:

Recommend that the installation antenna alignment procedure be changed through to specify a 2° IFF antenna lag rather than 1°.

REASON: Experience has shown that with only a 1° lag, the antenna servo system is too sensitive to wind gusting in excess of 27 knots, and has a tendency to rapidly accelerate and decelerate as it hunts, causing strain to the drive train. Hunting is minimized by adjusting the lag to 2° without degradation of operation.

Item 5, Function column. Change "2 db" to "3db."

REASON: The adjustment procedure for the TRANS POWER FAULT indicator calls for a 3 db (500 watts) adjustment to light the TRANS POWER FAULT indicator.

Add new step f.1 to read, "Replace cover plate removed in step e.1, above."

REASON: To replace the cover plate.

Zone C 3. On J1-2, change "+24 VDC to "+5 VDC."

REASON: This is the output line of the 5 VDC power supply. + 24 VDC is the input voltage.

TEAR ALONG DOTTED LINE

TYPED NAME, GRADE OR TITLE, AND TELEPHONE NUMBER

SSG I. M. DeSpirito 999-1776

SIGN HERE:

SSG I. M. DeSpirito

DA FORM 2028-2 (TEST) 1 AUG 74

P.S.--IF YOUR OUTFIT WANTS TO KNOW ABOUT YOUR MANUAL "FIND" MAKE A CARBON COPY OF THIS AND GIVE IT TO YOUR HEADQUARTERS.

HISA 1686-75

FILL IN YOUR
UNIT'S ADDRESS

FOLD BACK

DEPARTMENT OF THE ARMY

OFFICIAL BUSINESS

Commander
US Army Electronics Command
ATTN: DRSEL-MA-Q
Fort Monmouth, New Jersey 07703

TEAR ALONG DOTTED LINE

FOLD BACK

REVERSE OF DA FORM 2028-2 (TEST)



SOMETHING WRONG WITH THIS MANUAL?

THEN... JOT DOWN THE DOPE ABOUT IT ON THIS FORM, TEAR IT OUT, FOLD IT AND DROP IT IN THE MAIL!

FROM: (YOUR UNIT'S COMPLETE ADDRESS)

DATE

PUBLICATION NUMBER

DATE

TITLE

BE EXACT... PIN-POINT WHERE IT IS

IN THIS SPACE TELL WHAT IS WRONG AND WHAT SHOULD BE DONE ABOUT IT:

PAGE NO.

PARA-GRAPH

FIGURE NO.

TABLE NO.

TEAR ALONG DOTTED LINE

TYPED NAME, GRADE OR TITLE, AND TELEPHONE NUMBER

SIGN HERE:

FILL IN YOUR
UNIT'S ADDRESS

FOLD BACK

DEPARTMENT OF THE ARMY

OFFICIAL BUSINESS

Commander
US Army Electronics Command
ATTN: DRSEL-MA-Q
Fort Monmouth, New Jersey 07703

FOLD BACK

TEAR ALONG DOTTED LINE



SOMETHING WRONG WITH THIS MANUAL?

THEN... JOT DOWN THE DOPE ABOUT IT ON THIS FORM, TEAR IT OUT, FOLD IT AND DROP IT IN THE MAIL!

FROM: (YOUR UNIT'S COMPLETE ADDRESS)

DATE

PUBLICATION NUMBER

DATE

TITLE

BE EXACT... PIN-POINT WHERE IT IS

IN THIS SPACE TELL WHAT IS WRONG AND WHAT SHOULD BE DONE ABOUT IT:

PAGE NO.

PARA-GRAPH

FIGURE NO.

TABLE NO.

TEAR ALONG DOTTED LINE

TYPED NAME, GRADE OR TITLE, AND TELEPHONE NUMBER

SIGN HERE:

FILL IN YOUR
UNIT'S ADDRESS

FOLD BACK

DEPARTMENT OF THE ARMY

OFFICIAL BUSINESS

Commander
US Army Electronics Command
ATTN: DRSEL-MA-Q
Fort Monmouth, New Jersey 07703

FOLD BACK

TEAR ALONG DOTTED LINE

By Order of the Secretary of the Army:

BERNARD W. ROGERS
General, United States Army
Chief of Staff

Official:

PAUL T. SMITH
Major General, *United States Army*
The Adjutant General

DISTRIBUTION:

Active Army:

USASA (2)
COE (1)
TSG (1)
USAARENBD (1)
DARCOM (1)
TRADOC (2)
OS Maj Cmd (4)
LOGCOMDS (3)
MICOM (2)
TECOM (2)
USACC (4)
MDW (1)
Armies (2)
Corps (2)
HISA (Ft Monmouth) (33)
Svc Colleges (1)
USASIGS (5)
USAADS (2)
USAFAS (2)
USAARMS (2)
USAIS (2)
USAES (2)
USAICS (3)

MAAG (1)
USARMIS (1)
Instls (2) except
Ft Gordon (10)
Ft Huachuca (10)
Ft Carson (5)
Ft Richardson (ECOM Ofc) (2)
LBAD (14)
SAAD (30)
TOAD (14)
SHAD (3)
Ft Gillem (10)
Sig FLDMS (1)
USAERDAA (1)
USAERDAW (1)
Units org under fol TOE:
(1 copy each unit)
11-500 (AA-AC)
29-16
29-26
29-36
29-134
29-136

NG: None

USAR: None

For explanation of abbreviations used, see AR 310-50.

PIN : 020009-000